

**Health Technology Assessment of various RT-PCR kits/methods for the
diagnosis of Influenza A/H1N1pdm09 virus in all age group patients
in India.**

Principal Investigator

Dr. Manohar Lal Choudhary,
National Institute of Virology, Pune

Co-Principal Investigator

Dr. Anita Shete
National Institute of Virology, Pune
and
Dr. Shalu Jain
HTAIn, DHR, New Delhi

Correspondence Address:

ICMR-National Institute of Virology
20A, Dr. Ambedkar Road, Camp
Pune-411001, Maharashtra, India.
Phone no- 020-26006290

List of Abbreviations

| | |
|----------|--|
| AIIMS | All India Institute of Medical Sciences |
| CDC | Centers for Disease Control and Prevention |
| DHR | Department of Health Research |
| FN | False Negative |
| FP | False Positive |
| GOI | Government of India |
| HA | Haemagglutinin |
| HTA | Health Technology Assessment |
| ICMR | Indian council of Medical Research |
| ILI | Influenza-like illness |
| INR | Indian Rupee |
| IPD | In Patient Department |
| NA | Neuraminidase |
| NCDC | National Centre for Disease Control |
| NIV | National Institute of Virology |
| NPV | negative predictive values |
| OPD | Out Patient Department |
| PICOS | Population - intervention - comparator - outcomes - study design |
| PPV | Positive predictive values |
| PRISMA | Preferred Reporting Items for Systematic reviews and Meta-analyses |
| RIDT | Rapid Influenza Diagnostic tests |
| rtRT-PCR | Real-time reverse transcriptase polymerase chain reaction |
| TN | True Negative |
| TP | True Positive |
| VRDL | Viral Research & Diagnostic Laboratories |
| WHO | World Health Organization |

Contents

| | |
|--|----|
| Executive Summary | 1 |
| 1. Introduction | 3 |
| 1.1 Background | |
| 1.2 Epidemiology: Indian Scenario | |
| 1.3 Diagnosis and Treatment Methods Available in India | |
| 2. Rational of the study | 8 |
| 2.1 Policy Question | |
| 2.2 Research Question | |
| 2.3 Aim & Objectives | |
| 3. Methods | 10 |
| 3.1 PICO | |
| 3.2 Systematic Literature Review | |
| 3.3 Primary Data Collection | |
| 4. Results | 18 |
| 4.1 Results from Literature Review | |
| 4.2 Results from Validation Study | |
| 4.3 Primary Costing Study | |
| 4.4 Final Summary Table | |
| 4.5 Study Recommendations | |
| 5. Strengths & Limitations of The Study | 31 |
| Acknowledgement | 31 |
| References | 32 |
| Annexures 1: Pandemic H1N1/09 Assay kit - Invitrogen | 34 |
| Annexures 2: Artus- Qiagen | 37 |
| Annexures 3: TRUPCR- 3BBlackBio Bhopal | 40 |
| Annexures 4: Xpert Flu- Cepheid | 43 |

Executive Summary

Lower respiratory tract viral infections, including those due to influenza, are among the most common infectious diseases in humans and they are associated with significant morbidity and mortality. Seasonal influenza viruses infect 5–15% of the human population each year, resulting in ~500,000 deaths worldwide. Influenza is vaccine-preventable and antiviral treatment is available. A significant number of severely ill patients infected with H1N1pdm09 requiring intensive care and mechanical ventilation for severe viral pneumonia.

Nucleic acid tests are sensitive and specific and provide a rapid diagnosis, making them invaluable for patient and outbreak management. Real-time polymerase chain reaction (PCR) can be considered as gold standard for detection of influenza viruses due to its high sensitivity and specificity. Real time RT-PCR developed by WHO is considered as gold standard method for influenza A H1N1pdm09 diagnosis from Nasal/throat swabs.

Currently in India, suspected patients are screened by clinician and prescribing Oseltamavir drug without waiting for test report. Government of India recommended testing of samples from suspected patients of category C only. Indiscriminate use of anti influenza drug may develop resistance in virus. Limited labs are testing H1N1pdm09 virus in country and have not been able to effectively implement at large programs due to lack of adequate infrastructure, trained manpower and limited resources and high costing of kits. Sensitivity, specificity and cost of different tests have huge variation. The purpose of this assessment was to appraise the current evidence for the clinical effectiveness (in terms of sensitivity and specificity) and costing of kits against CDC/WHO real time RT-PCR for diagnosis of influenza A/H1N1pdm09 in India.

Sensitivity and specificity was obtained from kits (n=4) evaluated at NIV. Thermo Fisher Scientific (Invitrogen) Pandemic H1N1/09 Assay kit sensitivity and specificity for Influenza A target of A(H1N1)pdm09 virus was 100% (95% CI: 91.8, 100) and 100% (95% CI: 96.53, 100) respectively. Sensitivity and specificity for Influenza Hemagglutinin H1 target of A/H1N1pdm09 virus was 100% (95% CI: 91.8, 100) and 100% (95% CI: 96.53, 100) respectively. Sensitivity and specificity for Influenza A target of A (H3N2) virus was 100% (95% CI: 85.69, 100) and 100% (95% CI: 97.06, 100) respectively.

TRUPCR H1N1 kit (3BBlackBio, Bhopal) sensitivity and specificity for Influenza A target was 100% (95% CI: 95.06, 100) and 94.87% (95% CI: 87.54, 97.99) respectively. Sensitivity and specificity for Influenza H1 target of A(H1N1)pdm09 virus was 94.44% (95% CI: 84.89, 98.09) and 100% (95% CI: 96.23, 100) respectively.

Qiagen artus Infl./H1 LC/RG RT-PCR Kit sensitivity and specificity for Influenza target was 84.78% (95% CI: 76.06, 90.71) and 96.61% (95% CI: 88.46, 99.07) respectively. Sensitivity and specificity for Influenza H1 target of A(H1N1)pdm09 virus was 94.55% (95% CI: 85.15, 98.13) and 98.96% (95% CI: 94.33, 99.82) respectively.

Cepheid Xpert[®] Flu kit sensitivity and specificity for FluA target of A(H1N1)09pdm virus tested was 100% (95% CIs: 88.65, 100) and 99% (95% CIs: 95.39, 99.85) respectively. Sensitivity and specificity for influenza hemagglutinin H1 target of A/H1N1pdm09 virus tested was 93.33% (95% CIs: 78.68, 98.15) and 100% (95% CIs: 96.87, 100) respectively. Sensitivity and specificity for Influenza B virus was 96.67% (95% CIs: 83.33, 99.41) and 100% (95% CIs: 96.87, 100) respectively. Sensitivity and specificity for Flu A target of A (H3N2) virus tested was 63% (95% CIs: 38.64, 81.52) and 100% (95% CIs: 97.19, 100) respectively.

Influenza A/H1N1pdm09 testing cost (Rs) per sample for invitrogen kit was 2015, Qiagen kit 1902, TruPCR kit 1660, and Cepheid kit 4342. In view of highest sensitivity and specificity among all the kits evaluated in this study, Invitrogen kit is recommended for diagnosis of influenza A/H1N1pdm09 virus from clinical samples.

1. BACKGROUND:

Lower respiratory tract viral infections, including those due to influenza, are among the most common infectious diseases in humans and they are associated with significant morbidity and mortality [Lim et al 2016]. Despite decades of surveillance and pharmaceutical and non-pharmaceutical interventions, seasonal influenza viruses continue to cause epidemics around the world each year. Seasonal influenza viruses infect 5–15% of the human population each year, resulting in ~500,000 deaths worldwide [Stohr K 2002]. The annual recurrence of seasonal epidemics is attributed to the continued evolution of seasonal influenza viruses, which enables them to escape the immunity that is induced by prior infections or vaccination, and to the ability of those viruses to be transmitted efficiently from human-to-human via respiratory droplets, direct contact and fomites. Influenza is vaccine-preventable and effective in preventing the spread of seasonal influenza virus epidemics, but they must be updated regularly to keep pace with the evolution of the circulating viruses.

Influenza viruses belong to the *Orthomyxoviridae* family and are divided into types A, B, C and D. Influenza types A and B are responsible for epidemics of respiratory illness that are often associated with increased rates of hospitalization and death. Influenza type A and B viruses have 8 genes that code for 11 proteins, including the surface proteins haemagglutinin (HA) and neuraminidase (NA). Influenza A viruses are further classified into subtypes based on the combination of haemagglutinin (HA) and neuraminidase (NA) glycoproteins on their surfaces. To date, 18 HA subtypes and 11 NA subtypes have been identified.

The hallmark of human influenza viruses is their ability to undergo antigenic change, which occurs by two ways: **Antigenic drift** and **Antigenic shift**.

Antigenic drift– is a process of gradual and relatively continuous change in the viral HA and NA proteins. It results from the accumulation of point mutations in the HA and NA genes during viral replication. Both influenza type A and B viruses undergo antigenic drift, leading to new virus strains. The emergence of these new strains necessitates the frequent updating of influenza vaccine virus strains. Because antibodies to previous influenza infections may not provide full protection against the new strains resulting from antigenic drift, individuals can have many influenza infections over a lifetime.

Antigenic shift– in addition to antigenic drift, influenza type A viruses can also undergo a infrequently and unpredictably type of change called antigenic shift. A shift has occurred when an influenza type A virus emerges among humans bearing either a HA protein or a combination of HA and NA proteins that have not been circulating among humans in recent years.

In India, peaks of influenza were observed during July-September coinciding with monsoon in cities Delhi and Lucknow (north), Pune (west), Allaphuza (southwest), Nagpur (central), Kolkata (east) and Dibrugarh (northeast), whereas Chennai and Vellore (southeast) revealed peaks in October-November, coinciding with the return monsoon months in these cities. In Srinagar (Northern most city at 34°N latitude) influenza circulation peaked in January-March in winter months (Kaul et al 2014, Chadha et al 2015).

Antiviral treatment is available and effective for influenza if the disease is identified early in the course of illness, so rapid and accurate laboratory diagnosis is particularly important in both the inpatient and outpatient settings. The rapid and accurate diagnosis of the underlying pathogen is crucial for establishing good clinical practices aimed at reducing morbidity and mortality. In addition, knowing the etiologic agent of these infections can result in significant improvement in patient management by permitting the judicious use of antiviral agents in an era where antiviral resistance is continuing to increase. Epidemics of influenza occur almost every year in temperate climates, the rates and severity of illness caused can vary substantially from year to year. The severity of annual epidemics is affected by several factors including the types, subtypes and strains of circulating viruses, and the level of protective antibodies in the general population.

Nair et al (2013) estimated that in 2010, 11.9 million (95% CI 10.3-13.9 million) episodes of severe and 3.0 million (2.1-4.2 million) episodes of very severe ALRI resulted in hospital admissions in young children worldwide. They estimated that roughly 265,000 (95% CI 160,000-450,000) in-hospital deaths took place in young children, with 99% of these deaths in developing countries.

Influenza was associated with 10% (95% CI 8%-11%) of respiratory hospitalizations in children <18 y worldwide, ranging from 5% (95% CI 3%-7%) among children <6 mo to 16% (95% CI 14%-20%) among children 5-17 y (Lafond et al 2016). On average, estimated influenza results in approximately 374,000 (95% CI 264,000 to 539,000) hospitalizations in

children <1 y-of which 228,000 (95% CI 150,000 to 344,000) occur in children <6 mo-and 870,000 (95% CI 610,000 to 1,237,000) hospitalizations in children <5 y annually. Influenza-associated hospitalization rates were more than three times higher in developing countries than in industrialized countries (150/100,000 children/year versus 48/100,000) (Lafond et al 2016).

1.2 Epidemiology: Indian Scenario

A significant number of severely ill patients infected with H1N1pdm09 requiring intensive care and mechanical ventilation for severe viral pneumonia. Pandemic H1N1 virus had significantly higher risk of hospitalization than those positive for seasonal influenza-A viruses (Mishra et al 2010). The rapidity with which the pandemic (H1N1) 2009 virus spread highlighted the need for timely and effective surveillance systems to detect emerging viruses with pandemic potential, and the need for standard platforms for data sharing and dissemination.

Influenza surveillance was carried out in patients with influenza-like illness (ILI) presenting at All India Institute of Medical Sciences (AIIMS), New Delhi. Of the 3264 samples tested, 541 (17%) were positive for influenza viruses, of which 221 (41%) were pandemic Influenza A(H1N1)pdm09, 168 (31%) were seasonal influenza A, and 152 (28%) were influenza B (Broor et al 2012). Influenza A/H1N1pdm09 and influenza B were found in 58% and 42% samples respectively from November 2012 to Feb 2013 in Kashmir, India (Koul et al., 2013)

Population-based active surveillance in India showed higher incidence rates for influenza A(H1N1)pdm09 among children during pandemic versus postpandemic periods (345 vs. 199/1,000 person-years), whereas adults had higher rates during postpandemic versus pandemic periods (131 vs. 69/1,000 person-years) (Broor et al 2012).

Chadha et al (2013) conducted a population-based study to estimate the incidence of laboratory confirmed influenza-associated hospitalizations in a rural community in Pune, western India during pandemic and post pandemic periods (May 2009-April 2011). Among 9,426 hospitalizations, 3,391 (36%) patients were enrolled; 665 of 3,179 (20.9%) tested positive for influenza. Of 665 influenza positives, 340 (51%) were pandemic A(H1N1)pdm09 and 327 (49%) were seasonal, including A/H3 (16%), A/H1 (3%) and influenza B (30%).The proportion of patients with influenza peaked during August 2009 (39%) and 2010 (42%). The adjusted annual incidence of influenza hospitalizations was 46.8/10,000 during pandemic and

40.5/10,000 during post-pandemic period with comparable incidence of A(H1N1)pdm09 during both periods (18.8 and 20.3, respectively). The incidence of both H1N1pdm09 virus and seasonal hospitalized influenza disease was highest in the 5-29 year olds.

Hirve et al (2015) conducted a multi-site population-based surveillance study to estimate and compare rates of influenza-associated hospitalization at Ballabgarh and Vadu during 2010-2012. Healthcare utilization surveys (HUS) showed that 69% and 67% of hospitalizations occurred at study facilities at Ballabgarh and Vadu, respectively. The proportion of patients with influenza was higher at Vadu than Ballabgarh annually (2010: 21% vs. 5%, $p < 0.05$; 2011: 18% vs. 5%, $p < 0.05$; 2012: 23% vs. 5%, $p < 0.05$). Annual adjusted influenza-associated hospitalization rates were 5-11 fold higher in Vadu (20.3-51.6 per 10,000) vs Ballabgarh (4.4-6.3 per 10,000). At both sites, influenza A/H1N1pdm09 and B predominated during 2010, A/H3N2 and B during 2011, and A/H1N1pdm09 and B during 2012.

1.3 Diagnosis and Treatment methods available in India

Nucleic acid tests are sensitive and specific and provide a rapid diagnosis, making them invaluable for patient and outbreak management. Real-time polymerase chain reaction (PCR) can be considered the gold standard for detection of influenza viruses due to its high sensitivity and specificity. Real time RT-PCR developed by WHO is considered as gold standard method for influenza A H1N1pdm09 diagnosis from Nasal/throat swabs.

In India, all the central and state govt labs are testing suspected H1N1pdm09 cases using real time RT-PCR test using H1N1pdm09 assay kit developed by WHO collaborating centre CDC Atlanta USA and licensed to Invitrogen BioServices for manufacturing and marketing. Newer version of CDC kit developed in 2015 and licensed to Integrated DNA Technologies for manufacturing. Whenever required, National Institute of Virology, Pune or NCDC, Delhi centrally procure the required reagents (H1N1pdm09 assay kit, RT-PCR kit, Nucleic acid extraction kit and viral transport media) and distributing to the NIV, VRDL and NCDC network central govt labs. State govt labs and private labs are procuring reagents at their own. In India, all the states have Influenza testing facility by real time RT-PCR.

All individuals seeking consultations for flu-like symptoms screened at healthcare facilities, both Government and private or examined by a doctor and categorized into A, B and C. In

order to prevent and contain outbreaks of Influenza, the following guidelines for screening, testing and isolation are to be followed (<https://ncdc.gov.in/showfile.php?lid=361>):

Category- A (uncomplicated/mild):

- Symptomatology: Patients with mild fever and cough/ sore throat with or without body aches, headache, diarrhea and vomiting will be categorized as Category-A.
- Diagnostic test: Testing of such patients (Category-A) for Influenza is not required
- Treatment: They do not require Oseltamivir and should be treated for the symptoms mentioned above. The patients should be monitored for their progress and reassessed at 24 to 48 hours by the doctor.
- Isolation: Patients should confine themselves at home and avoid mixing up with public and high-risk members in the family

Category-B (uncomplicated but severe symptoms / high risk groups):

- ❖ In addition to all the signs and symptoms mentioned under Category-A, if the patient has high grade fever (≥ 102 F) and severe sore throat
- ❖ In addition to all the signs and symptoms mentioned under Category-A, individuals having one or more of the following high-risk conditions
 1. Age ≥ 65 years
 2. Pregnancy (including up to two weeks post-partum)
 3. Infants and Children aged ≤ 5 years (especially < 2 years of age)
 4. Chronic respiratory disease
 5. Chronic heart, kidney, liver or neurological disease
 6. Diabetes mellitus
 7. Blood disorders (including haemoglobinopathies)
 8. Persons with immunosuppression (including HIV/ AIDS & use of long term (≥ 2 weeks) corticosteroids, Post-transplant patients)
 9. Extreme obesity (BMI ≥ 40 kg/m²)
 10. Malignancy
- Diagnostic test: Testing of the Category-B patient for Influenza is not required.
- Treatment: They should receive Oseltamivir along with symptomatic treatment.
- Isolation: All patients of Category-B should confine themselves at home and avoid mixing with public and high-risk members in the family.

Category-C (Complicated):

- **Symptomatology:** In addition to the above signs and symptoms of Category-A and Category-B, if the patient has one or more of the following: **Symptoms and signs of complicated influenza Symptoms**

| Symptoms | Signs |
|--|-----------------------|
| Breathlessness | Tachypnoea |
| Hemoptysis | SpO ₂ <90% |
| Altered mental status | Hypotension |
| Somnolence and Poor feeding (in children) | Reduced urine output |
| Seizures | Cyanosis |
| Decreased urine output | |
| Persistence or worsening of initial symptoms beyond 72 hours | |
| Worsening of underlying chronic conditions like Diabetes Mellitus, Chronic Kidney Disease etc. | |

- **Diagnostic test:** These patients should be tested for influenza; start empirical antiviral therapy (oseltamivir) while results are pending
- **Treatment:** immediate hospitalization and treatment.

2. Rational of the study:

Indiscriminate use of anti influenza drug may develop resistance in virus. Limited labs are testing H1N1pdm09 virus in country and have not been able to effectively implement at large programs due to lack of adequate infrastructure, trained manpower and limited resources and high costing of kits. Sensitivity, specificity and cost of different molecular tests exhibits huge variation. The purpose of this assessment was to appraise the current evidence for the clinical effectiveness (in terms of sensitivity and specificity) and cost-effectiveness of different RT-PCR kits against CDC/WHO real time RT-PCR for diagnosis of influenza A/H1N1pdm09 in India.

2.1 POLICY QUESTION:

Which RT-PCR based test should be used as diagnostic test for H1N1pdm09 virus in India?

2.2 RESEARCH QUESTION:

1. What is the diagnostic effectiveness and which is cost effective testing strategy/protocol for diagnosis of Influenza A/H1N1pdm09 virus in India?
2. What will be the benefit of introduction of Influenza A/H1N1pdm09 virus diagnosis in India medical management or/and in public health decision-making?
3. How feasible is introduction of large scale Influenza A/H1N1pdm09 virus diagnostic program in India?

2.3 AIM & OBJECTIVES:

1. To assess sensitivity and specificity of various real time RT-PCR assays using as a diagnostic test for H1N1pdm09 virus in India over CDC real time RT-PCR.
2. To assess the cost-effectiveness of the various real time RT-PCR assays using as a diagnostic test for H1N1pdm09 virus in India over CDC real time RT-PCR.
3. To study the turnaround time (speed of diagnosis) of various diagnostic tests.
4. To assess the equity aspects of introducing RT-PCR method for H1N1 diagnosis as standard practice.

3. METHODOLOGY:

PICO criteria used for study were as given below:

3.1 PICO

- Population: All age group patients with influenza like illness.
- Intervention: Real time RT-PCR based methods/commercial kits
- Comparator: Centre for Disease Control and Prevention (CDC) protocol as a gold standard.
- Outcomes: Clinical effectiveness (sensitivity & specificity), diagnostic accuracy and cost effectiveness of real time RT-PCR based methods/commercial kits.

3.2 Clinical Effectiveness (Sensitivity & Specificity) Literature Review

The research methodology was designed using PRISMA-P (Preferred Reporting Items for Systematic reviews and Meta-analyses Protocols) statement guidelines including the preparation of a pre-specified protocol and analysis plan.

1. Databases & Sources:

Comprehensive electronic searches were undertaken to identify relevant reports of published studies from April 2009 to assess the diagnostic performance (in terms of sensitivity and specificity) and cost-effectiveness of the test. Major electronic databases searched were Pubmed, EMBASE, Wiley Online Library, Pubmed Central (PMC), U.S. National Library of Medicine (NLM), Cochrane Database of Systematic Reviews (CDSR), Centre for Reviews & Dissemination (CRD-NIHR) including Database of Abstracts of Reviews of Effects (DARE) Health Technology Assessment Database (HTA) and NHS Economic Evaluation database (NHS EED). In addition to literature review from electronic databases, efforts have also been made to collect relevant information from manufacturer's website including their reports and supplementary data related to their products.

2. Electronic Search Strategy:

Keeping in view the research question, specific keywords were selected and strategies were made using conjunctions and linking words like 'AND', 'OR', 'NOT'. Various combinations of keywords and conjunctions were attempted applying a range of search filters like article type, date range searched; availability of text and species etc. and the strategy giving maximum relevant output was finally selected. An individual search strategy was made for each electronic database searched. The electronic databases were

last searched on 13 August 2019. The final search strategy selected to perform Pubmed database search is given in the **Table 1**.

3. Study Selection: The results/outcomes of the search conducted using different databases were further selected on the basis of Inclusion and Exclusion criteria designed at the time of protocol preparation. Studies were selected for inclusion/exclusion through a two-stage process as illustrated in PRISMA flowchart (**Fig 1**). The inclusion and exclusion criteria opted for the study selection was as follows:

- **Inclusion criteria:** The studies were included on the basis of PICOS design which includes the following criteria:
 - Population: All age group patients with influenza like illness.
 - Intervention: Real time RT-PCR based methods/commercial kits
 - Comparator: Centre for Disease Control and Prevention (CDC) protocol as a gold standard.
 - Outcomes: Clinical effectiveness (sensitivity & specificity), diagnostic accuracy and cost effectiveness of real time RT-PCR based methods/commercial kits.
 - Timing: Published between April 01, 2009 to June 21, 2019.
- **Exclusion criteria:** The studies which were found irrelevant in relation to the research question were excluded. The criteria opted for exclusion is as follows:
 - Rapid Influenza Diagnostic tests (RIDTs), Digital Immuno Assays (DIAs) and Point of care tests (POCs)
 - RT-PCR of other respiratory viruses.
 - Kits/versions not including target for Influenza A (H1N1pdm09).
 - Comparator other than CDC gold standard.
 - Languages other than English.

The specimen types acceptable for inclusion were nasopharyngeal aspirates, swabs, or washes; nasal aspirates, swabs, or washes; and throat swabs. For a study to be eligible, the index test and comparator needed to test the same clinical specimen. We have finally included the studies demonstrating the research question and PICOS/T strategy, published in English language providing original data on the clinical effectiveness in terms of sensitivity and specificity of real time RT-PCR based commercial kits for the diagnosis of Influenza A/H1N1pdm09 against CDC based real time RT-PCR method as a gold standard.

4. **Data Extraction:** A data extraction sheet was created in Microsoft Office Excel 2007 and all data pertaining to Author/Journal information, Index test/commercial kit/ kit version, reference test (comparator), patient/clinical data and clinical effectiveness data (overall & specific for H1N1) were extracted. Two reviewers independently extracted data. Disagreements were resolved by consensus or by a third reviewer. Articles that assessed several index tests against a reference standard were counted as several studies; a separate extraction form was completed for each index test. **Table 2** illustrates the characteristics of the studies used for data synthesis & analysis to demonstrate the diagnostic accuracy of real time RT-PCR based kits for the detection of Influenza A H1N1pdm09.
5. **Data Synthesis & Analysis:** For each included study, we have calculated sensitivity, specificity, along with 95% confidence intervals (CIs). All of these parameters have been studied for overall (total no. of viruses detected by the index test) and independently for Influenza A/H1N1pdm09. The pooled overall sensitivities and specificities have also been analyzed irrespective of the index test used. All analysis was carried out using Meta Disc software version 1.4.

Table 1: Search strategy protocol for the identification of studies

| Electronic Database | Search strategy used | Filters applied | Articles/ Citations found | Relevant findings |
|---|--|--|---------------------------|-------------------|
| Pubmed | Comparison) OR Influenza) OR H1N1) AND Real time) OR RT PCR) AND CDC AND Sensitivity | Article type: Journal Article, Systematic Reviews, Meta-analysis and Evaluation studies. Text availability: Abstract Publication dates: 01.04.2009 to 21.06.2019 Species: Humans Ages: Birth to 80+ years (all age group) Sort by: Best Match | 207 | 137 |
| PubMed Central (PMC) | Comparison) OR Influenza) OR H1N1) AND Real time) OR RT PCR) AND CDC AND Sensitivity | Article type: Journal Article, Systematic Reviews, Meta-analysis and Evaluation studies. Publication dates: 01.04.2009 to 21.06.2019 Text availability: Abstract | 754 | 2 |
| Wiley Online Library | Comparison) OR Influenza) OR H1N1) AND Real time) OR RT PCR) AND CDC AND Sensitivity | Publication dates: 01.04.2009 to 21.06.2019 Text availability: Abstract | 311 | 0 |
| EMBASE | Comparison) OR Influenza) OR H1N1) AND Real time) OR RT PCR) AND CDC AND Sensitivity | Article type: Journal Article, Systematic Reviews, Meta-analysis and Evaluation studies. Publication dates: 01.04.2009 to 21.06.2019 Text availability: Abstract | 71 | 1 |
| Cochrane Database of Systematic Reviews (CDSR) | Comparison) OR Influenza) OR H1N1) AND Real time) OR RT PCR) AND CDC AND Sensitivity | Article type: Journal Article, Systematic Reviews, Meta-analysis and Evaluation studies. Publication dates: 01.04.2009 to 21.06.2019 Text availability: Abstract | 2131 | 8 |
| CRD-NIHR including DARE, NHS EED, INAHTA-HTA | Comparison) OR Influenza) OR H1N1) AND Real time) OR RT PCR) AND CDC AND Sensitivity | Article type: Journal Article, Systematic Reviews, Meta-analysis and Evaluation studies. Publication dates: 01.04.2009 to 21.06.2019 Text availability: Abstract | 545 | 0 |
| U.S. National Library of Medicine (U.S.NLM) | Comparison) OR Influenza) OR H1N1) AND Real time) OR RT PCR) AND CDC AND Sensitivity | Article type: Journal Article, Systematic Reviews, Meta-analysis and Evaluation studies. Publication dates: 01.04.2009 to 21.06.2019 Text availability: Abstract | 235 | 0 |

Fig 1: Flowchart of systematic search

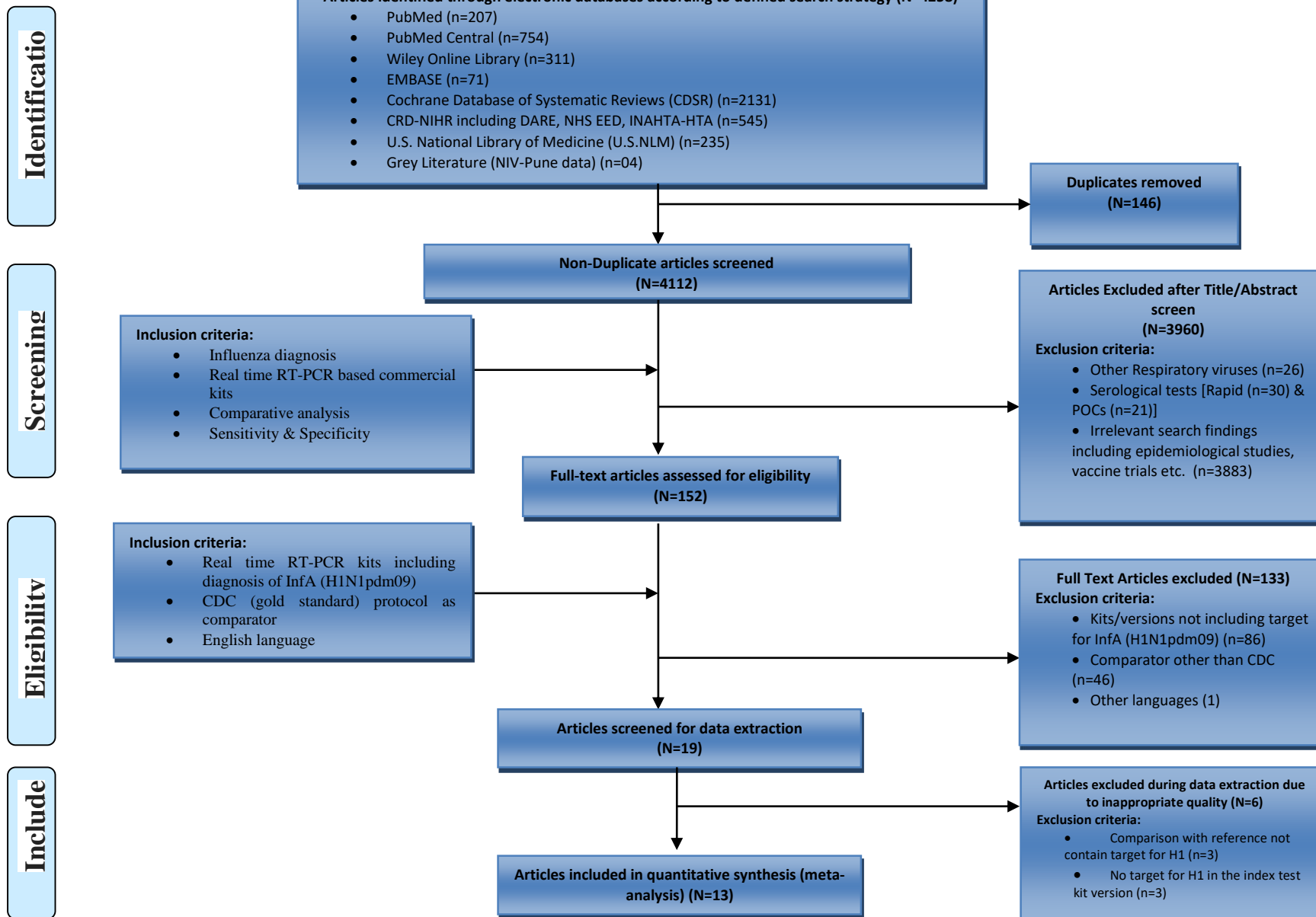


Table 2: Characteristics of the included studies, in all studies CDC /WHO test used as gold standard

| Author, year [ref.] | Country | Index Test, kit version, Mfd. country | No. of viruses detected, (Name), [Subtype] | Study type, (Sample type) | Age Group | Sample size | TP | FN | FP | TN |
|-----------------------------------|---------|---|--|--|--|-------------|----|----|----|-----|
| Lalle <i>et al.</i> 2011 [1] | Italy | RealStar Influenza Screen & Type RT-PCR kit 5.0 (Astra Diagnostics, Hamburg, Germany) | 2, (Inf A & B), [H1N1] | Retrospective, (Nasopharyngeal swab for Inf A and sputum sample for Inf B) | Not Known | 81 | 7 | 0 | 24 | 50 |
| Pierro <i>et al.</i> 2013 [2] | Italy | Xpert® Flu assay (Cepheid, USA) | 2, (Inf A & B), [H1N1] | Prospective, (Nasopharyngeal swab) | Not Known | 60 | 18 | 3 | 2 | 37 |
| Banerjee 1 <i>et al.</i> 2018 [3] | USA | GeneXpert Xpress Flu/RSV (Cepheid,USA) | 3(Inf A, Inf B & RSV), [H1N1] | Retrospective, (Nasopharyngeal swabs) | 2 months to 80 months (median age=7 months) | 225 | 29 | 0 | 0 | 196 |
| Banerjee 2 <i>et al.</i> 2018 [3] | USA | Hologic Panther Fusion Flu A/B/RSV (Fusion) | 3(Inf A, Inf B & RSV), [H1N1] | Retrospective, (Nasopharyngeal swabs) | 2 months to 80 months (median age=7 months) | 225 | 29 | 0 | 0 | 196 |
| Banerjee 3 <i>et al.</i> 2018 [3] | USA | Luminex Aries Flu A/B & RSV (Aries) | 3(Inf A, Inf B & RSV), [H1N1] | Retrospective, (Nasopharyngeal swabs) | 2 months to 80 months (median age=7 months) | 225 | 28 | 1 | 0 | 196 |
| Banerjee 4 <i>et al.</i> 2018 [3] | USA | Influenza A/B & RSV (Liat) | 3(Inf A, Inf B & RSV), [H1N1] | Retrospective, (Nasopharyngeal swabs) | 2 months to 80 months (median age=7 months) | 225 | 29 | 0 | 0 | 196 |
| Banerjee 5 <i>et al.</i> 2018 [3] | USA | Diasorin Simplexa Flu A/B & RSV (Simplexa) | 3(Inf A, Inf B & RSV), [H1N1] | Retrospective, (Nasopharyngeal swabs) | 2 months to 80 months (median age=7 months) | 225 | 29 | 0 | 0 | 196 |
| Banerjee 6 <i>et al.</i> 2018 [3] | USA | Biofire FilmArray Respiratory Panel (RP) | 20 (adenovirus, coronavirus 229E, coronavirus HKU1, coronavirus NL63, coronavirus OC43, human metapneumovirus, influenza A, influenza A subtype H1, influenza A subtype H3, influenza A subtype 2009 H1, influenza B, parainfluenza virus 1, 2, 3, 4, rhinovirus/ enterovirus, respiratory syncytial virus, Bordetella pertussis, <i>Chlamydia pneumoniae</i> , and <i>Mycoplasma pneumoniae</i> .) | Retrospective, (Nasopharyngeal swabs) | 2 months to 80 months (median age=7 months) | 225 | 29 | 0 | 0 | 196 |
| Hang <i>et al.</i> 2018 [4] | Vietnam | Luminex xTAG Respiratory Viral Panel FAST v2 | 19 (Influenza A, Influenza A subtype H1, Influenza A subtype H3, Influenza A subtype 2009 H1N1, Influenza B, Respiratory Syncytial Virus, Coronavirus NL63, Coronavirus OC43, Coronavirus HKU1, Coronavirus 229E, Parainfluenza 1, 2, 3, 4, Human Metapneumovirus, Enterovirus/Rhinovirus, Adenovirus, and Human Bocavirus) | Retrospective, (Nose & Throat swab) | All Age group (median age of children was 1 year and of adults was 46 years) | 442 | 9 | 0 | 1 | 432 |

| | | | | | | | | | | |
|--------------------------------------|-----------|---|--|--|---|-----|-----|----|---|-----|
| Wenzel <i>et al.</i> 2010 [5] | Germany | Roche RealTime Ready Influenza A/H1N1 detection set | 1 (Influenza A Matrix gene M2), [H1N1] | Retrospective, (Nasopharyngeal swabs, Nasal wash and nasal swab) | All age group | 359 | 112 | 2 | 7 | 238 |
| Tham <i>et al.</i> 2012 [6] | Vietnam | Roche RealTime Ready Influenza A/H1N1 detection set | 1 (Influenza A Matrix gene M2), [H1N1] | Retrospective, (Nose & Throat swab) | Age group 1 - 78 years (median age is 16.8 years) | 210 | 105 | 14 | 0 | 91 |
| Selvaraju 1 <i>et al.</i> 2010 [7] | USA | Prodesse ProFlu+ multiplex real time RT-PCR Assay (ProFlu+) | 4 (Influenza A, Influenza B, RSVA and RSVB), [H1N1] | Retrospective, (Not Known) | children | 150 | 30 | 0 | 0 | 120 |
| Selvaraju 2 <i>et al.</i> 2010 [7] | USA | MGB Alert Influenza A/B & RSV RUO assay (MGB) | 4 (Influenza A, Influenza B, RSVA and RSVB), [H1N1] | Retrospective, (Not Known) | children | 150 | 26 | 4 | 0 | 120 |
| Barbas <i>et al.</i> 2012 [8] | Argentina | Roche RealTime Ready Influenza A/H1N1 detection set | 1 (Influenza A Matrix gene M2), [H1N1] | Retrospective, (Nasal or Nasopharyngeal swabs) | Not Known | 136 | 55 | 17 | 7 | 57 |
| Dayakar <i>et al.</i> 2018 [9] | India | RealStar Influenza RT-PCR kit 3.0 (Altona Diagnostics, GmbH, Germany) | 2, (Inf A & B), [H1N1] | Retrospective, (Nasopharyngeal /throat swabs) | All age group | 118 | 13 | 0 | 0 | 105 |
| In House Report (Xpert Flu, Cepheid) | India | Xpert® Flu assay (Cepheid, France) | 2, (Inf A & B), [H1N1] | Retrospective, (Throat/nasal swab) | All age group | 149 | 28 | 2 | 0 | 119 |
| In House Report (TRUPCR) | India | TRUPCR H1N1 detection (IVD) kit | 1, (Inf A), [H1N1] | Retrospective, (Throat/nasal swab) | All age group | 152 | 51 | 3 | 0 | 98 |
| In House Report (Artus, Qiagen) | India | Artus Inf A./H1 LC/ RG RT-PCR kit (Qiagen, India Pvt. Ltd.) | 2, (Inf A & B), [H1N1] | Retrospective, (Throat/nasal swab) | All age group | 151 | 52 | 3 | 1 | 95 |
| In House Report (Invitrogen) | India | Invitrogen, Superscript III Platinum One Step qRT-PCR kit | 1, (Inf A), [H1N1] | Retrospective, (Throat/nasal swab) | All age group | 150 | 43 | 0 | 0 | 107 |

3.3 Primary Data Collection

Primary data were collected from in-house reports (NIV data), four (n=4) kits evaluated during the financial year 2018-2019.

Validation Study: From four different companies' influenza diagnosis molecular kits [Thermo Fisher Scientific (Invitrogen); TRUPCR H1N1 kit (3BBlackBio Bhopal); Qiagen artus Infl./H1 LC/RG RT-PCR Kit; and Cepheid Xpert® Flu kit] were evaluated and compared with CDC/WHO gold standard kit.

Primary Costing Study

The bottom-up approach of costing was used, to include prices of various components like consumables, instruments, infrastructure, overheads, Human resource information etc. were collected. For each of the facilities, annualization of capital costs was done. Annual factor was calculated using a discount factor of 3% and the life of the item. A maintenance rate of 10% was applied. Apportioning of joint/shared costs (Personnel, space or equipment that are being used for more than one activity) was calculated. Space cost was calculated by multiplying the estimates of furnished floor size of the facility with the local commercial rental price of the similar space. The total cost of the recurrent resources (consumables) was calculated by multiplying the unit price with the quantity of respective resource consumed. The resources (both capital and recurrent) which were shared in nature and were used in multiple activities were apportioned towards each of the respective activity using appropriate apportioning statistics. Staff members (scientist, technical assistant, technician and multitasking staff) which were jointly involved in a number of activities, proportional time spent in sample processing and testing activities by the staff member was used as an apportioning statistic for allocating their salaries towards these particular activities. Salary for technical assistant, technician and multitasking staff was used for calculation as contractual consolidated salary as per ICMR guidelines.

4. Results

4.1 Results of Systematic Literature Review and Meta-analysis:

1. Electronic database Search Results: A sum total of 4258 records identified through different electronic database searching and 4112 of which were screened after duplicates removal. After applying pre-specified inclusion/exclusion criteria, 3960 articles were found inappropriate and hence excluded after titles and abstracts screening. Rest of the articles (n=152) were selected for full text read and 133 of which were further screened and excluded as not found fit for further inclusions. Nineteen (n=19) studies were finally selected for data extraction and six (n=6) out of which were excluded due to inappropriate/insufficient data provided. We finally included 13 articles (8 Pubmed + 1 EmBase + 4 In-house evaluation reports/Unpublished data) in our meta-analysis of accuracy estimates (**Fig 1**).

2. Data Extraction: Thirteen (n=13) articles were finally selected for data extraction which includes: [Author/Journal information (title, authors, journal, publication year, country)], [Index test/commercial kit (name of kit, manufacturing company/country, kit version, no. of viruses/subtypes tested, time taken)], [Reference test (CDC)], [Patient/clinical data (sample size, age group, PID, sample type, retrospective/prospective study, time of sample collection etc.)], [Clinical effectiveness data (True positive, True negative, False positive, False negatives)] [**Table 2**]. All of the above mentioned data were extracted from included articles and maintained in Microsoft Office Excel 2007. Data extraction was done independently by two reviewers and the disagreements were resolved by consensus. Two of the included articles (Banerjee *et al.*, 2018 & Selvaraju *et al.*, 2010) was found to assess several index tests against a reference standard and were counted as several studies and quoted as Banerjee 1, 2, 3.....6 & Selvaraju 1, 2 in this study.

3. Data Synthesis and analysis: All the raw data from included studies were extracted. Further analysis was done using True positives (TP), False negatives (FN), False positives (FP) and True negatives (TN). The overall accuracy of the index test demonstrates the total number and subtypes of viruses detected. Individual accuracy defines specifically for H1N1pdm09.

Diagnostic accuracy of overall kit: Here we have considered the diagnostic accuracy of the overall kit including different subtypes of the influenza virus. The sensitivity of different kits varied from 46% to 100% whereas the specificity of different kits varied from 87% to 100% among the studies included in the review. Even for the same kit, there was huge variation between different studies both for sensitivity and specificity. (Table 3)

Diagnostic accuracy of H1N1: Here we have considered the diagnostic accuracy of the kit only for H1N1. The sensitivity of different kits varied from 76% to 100% whereas the specificity of different kits varied from 67% to 100% among the studies included in the review. Even for the same kit, there was huge variation between different studies both for sensitivity and specificity (Table 4).

Studywise diagnostic results (**Table 3**) and forest plot (**Figure 2**) showed statistically significant heterogeneity. Hence use of pooled estimates will not be appropriate. For H1N1 virus [**Table 4 & Figure 3**] similar results were noted. Therefore, we have used inhouse kit evaluation estimates for comparison purpose and interpretation of the results.

Table 3: Diagnostic accuracy of overall kit

| Study (Kit name) | Sensitivity | [95% Confidence Interval] | | Specificity | [95% Confidence Interval] | |
|---|--------------------|----------------------------------|-------|--|----------------------------------|-------|
| Lalle 2011 (Realstar) | 0.461 | 0.345 | 0.579 | 1.000 | 0.478 | 1.000 |
| Dayakar 2018 (Realstar) | 1.000 | 0.941 | 1.000 | 1.000 | 0.937 | 1.000 |
| Wenzel 2010 (Roche) | 0.984 | 0.955 | 0.997 | 0.870 | 0.810 | 0.917 |
| Tham 2012 (Roche) | 0.858 | 0.796 | 0.907 | 0.976 | 0.871 | 0.999 |
| Barbas 2012 (Roche) | 0.745 | 0.649 | 0.826 | 0.971 | 0.847 | 0.999 |
| Pierro 2013 (Xpert) | 0.656 | 0.468 | 0.814 | 0.929 | 0.765 | 0.991 |
| Banerjee 2018 (Xpert) | 0.983 | 0.951 | 0.996 | 0.938 | 0.828 | 0.987 |
| NIV Unpublished (Xpert Flu) | 1.000 | 0.884 | 1.000 | 0.992 | 0.954 | 1.000 |
| Banerjee 2018 (Hologic) | 0.989 | 0.960 | 0.999 | 1.000 | 0.926 | 1.000 |
| Banerjee 2018 (Aries) | 0.960 | 0.920 | 0.984 | 0.979 | 0.889 | 0.999 |
| Banerjee 2018 (Cobas) | 0.989 | 0.960 | 0.999 | 0.917 | 0.800 | 0.977 |
| Banerjee 2018 (Simplexa) | 0.915 | 0.864 | 0.952 | 0.958 | 0.857 | 0.995 |
| Banerjee 2018 (FilmArray) | 0.972 | 0.935 | 0.991 | 0.917 | 0.800 | 0.977 |
| Hang 2018 (xTAG) | 0.918 | 0.881 | 0.947 | 0.982 | 0.979 | 0.985 |
| Selvaraju 2010 (ProFlu+) | 0.983 | 0.940 | 0.998 | 1.000 | 0.894 | 1.000 |
| Selvaraju 2010 (MGB*) | 0.940 | 0.881 | 0.976 | 1.000 | 0.894 | 1.000 |
| NIV Unpublished (TruPCR) | 1.000 | 0.951 | 1.000 | 0.949 | 0.874 | 0.986 |
| NIV Unpublished (Artus) | 0.848 | 0.758 | 0.914 | 0.966 | 0.883 | 0.996 |
| NIV Unpublished (Invitrogen) | 1.000 | 0.918 | 1.000 | 1.000 | 0.966 | 1.000 |
| Pooled | 0.924 | 0.913 | 0.935 | 0.978 | 0.975 | 0.982 |
| Heterogeneity chi-squared = 287.76 (d.f.= 18) p < 0.001 Inconsistency (I-square) = 93.7 % No. studies = 19. | | | | Heterogeneity chi-squared = 81.27 (d.f.= 18) p < 0.001 Inconsistency (I-square) = 77.9 % No. studies = 19. | | |

*Not detecting H1 target

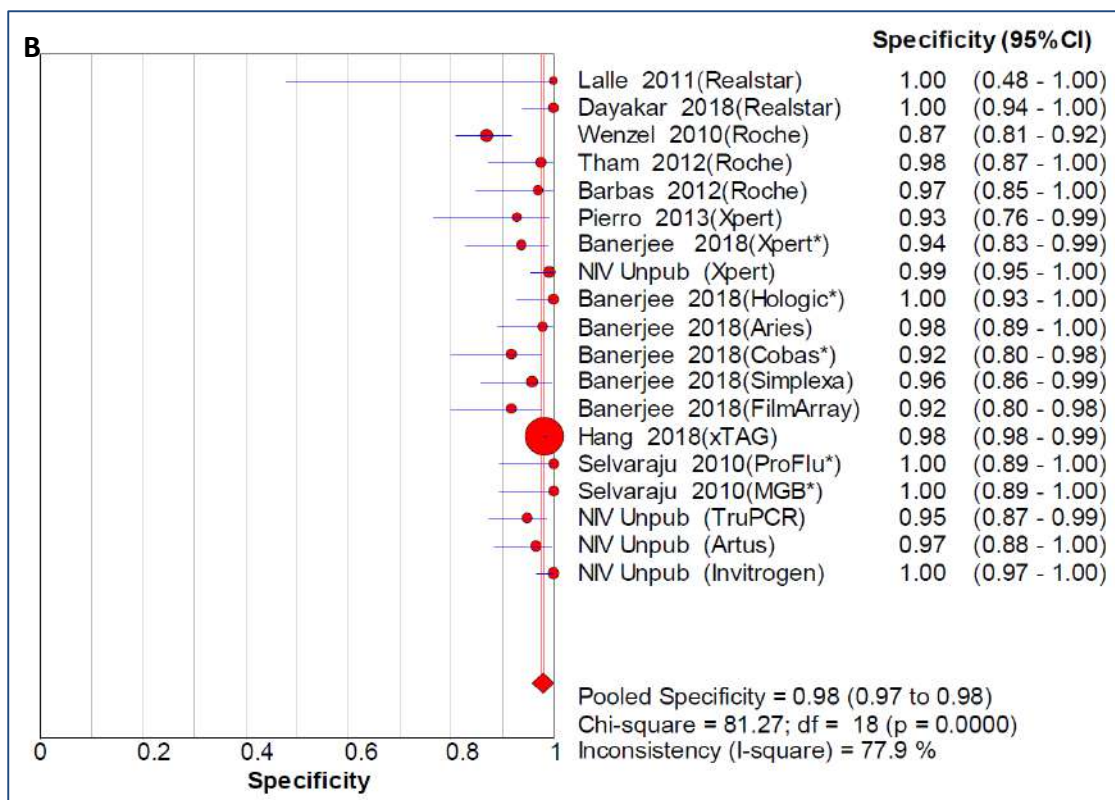
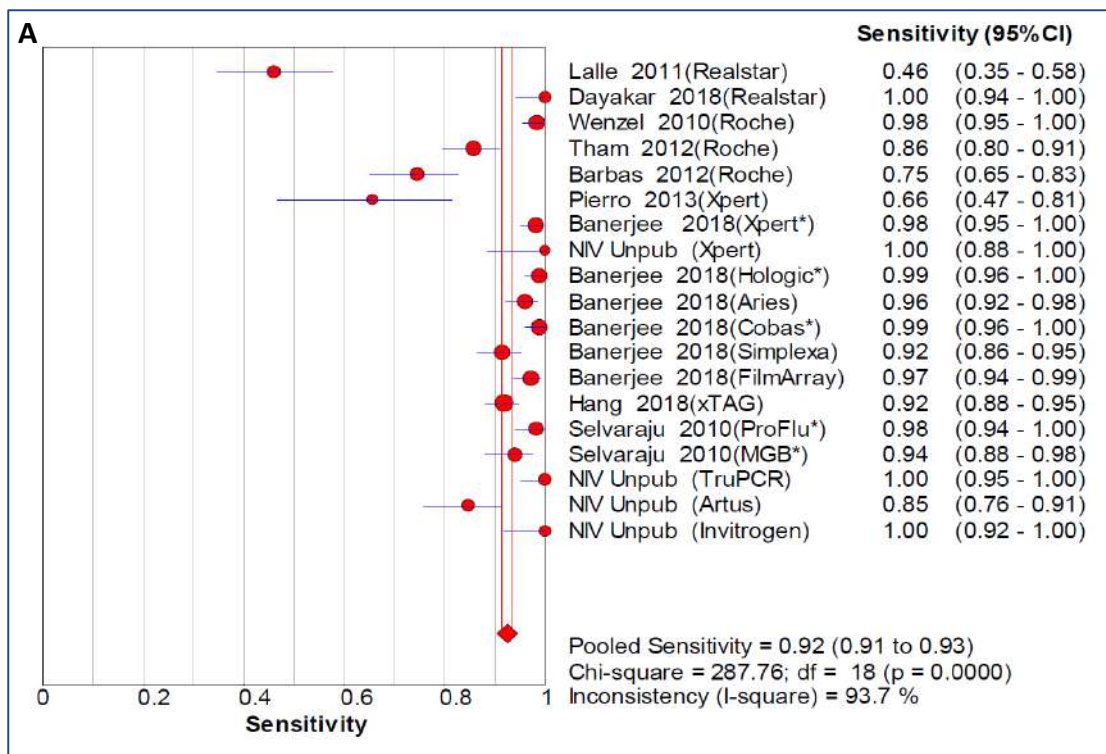


Figure 2: Forest plot for sensitivity (A) and specificity (B) of each individual study for overall kit, the pooled estimate are represented by diamond and the horizontal lines represent 95% confidence intervals (CI).

Table 4: Diagnostic accuracy of H1N1

| Study (Kit name) | Sensitivity | [95% Confidence Interval] | | Specificity | [95% Confidence Interval] | |
|--|--------------------|----------------------------------|-------|---|----------------------------------|-------|
| Lalle 2011 (Realstar) | 1.000 | 0.590 | 1.000 | 0.676 | 0.557 | 0.780 |
| Dayakar 2018 (Realstar) | 1.000 | 0.753 | 1.000 | 1.000 | 0.965 | 1.000 |
| Wenzel 2010 (Roche) | 0.982 | 0.938 | 0.998 | 0.971 | 0.942 | 0.988 |
| Tham 2012 (Roche) | 0.882 | 0.810 | 0.934 | 1.000 | 0.960 | 1.000 |
| Barbas 2012 (Roche) | 0.764 | 0.649 | 0.856 | 0.891 | 0.788 | 0.955 |
| Pierro 2013 (Xpert) | 0.857 | 0.637 | 0.970 | 0.949 | 0.827 | 0.994 |
| Banerjee 2018 (Xpert) | 1.000 | 0.881 | 1.000 | 1.000 | 0.981 | 1.000 |
| NIV Unpublished (Xpert) | 0.933 | 0.779 | 0.992 | 1.000 | 0.969 | 1.000 |
| Banerjee 2018 (Hologic) | 1.000 | 0.881 | 1.000 | 1.000 | 0.981 | 1.000 |
| Banerjee 2018 (Aries) | 0.966 | 0.822 | 0.999 | 1.000 | 0.981 | 1.000 |
| Banerjee 2018 (Cobas) | 1.000 | 0.881 | 1.000 | 1.000 | 0.981 | 1.000 |
| Banerjee 2018 (Simplexa) | 1.000 | 0.881 | 1.000 | 1.000 | 0.981 | 1.000 |
| Banerjee 2018 (FilmArray) | 1.000 | 0.881 | 1.000 | 1.000 | 0.981 | 1.000 |
| Hang 2018 (xTAG) | 1.000 | 0.664 | 1.000 | 0.998 | 0.987 | 1.000 |
| Selvaraju 2010 (ProFlu+) | 1.000 | 0.884 | 1.000 | 1.000 | 0.970 | 1.000 |
| Selvaraju 2010 (MGB*) | 0.867 | 0.693 | 0.962 | 1.000 | 0.970 | 1.000 |
| NIV Unpublished (TruPCR) | 0.944 | 0.846 | 0.988 | 1.000 | 0.963 | 1.000 |
| NIV Unpublished (Artus) | 0.945 | 0.849 | 0.989 | 0.990 | 0.943 | 1.000 |
| NIV Unpublished (Invitrogen) | 1.000 | 0.918 | 1.000 | 1.000 | 0.966 | 1.000 |
| Pooled | 0.936 | 0.917 | 0.953 | 0.985 | 0.980 | 0.989 |
| Heterogeneity chi-squared = 69.21 (d.f.= 18) p < 0.001 Inconsistency (I-square) = 74.0 % No. studies = 19. | | | | Heterogeneity chi-squared = 196.69 (d.f.= 18) p < 0.001 Inconsistency (I-square) = 90.8 % No. studies = 19. | | |

*Not detecting H1 target

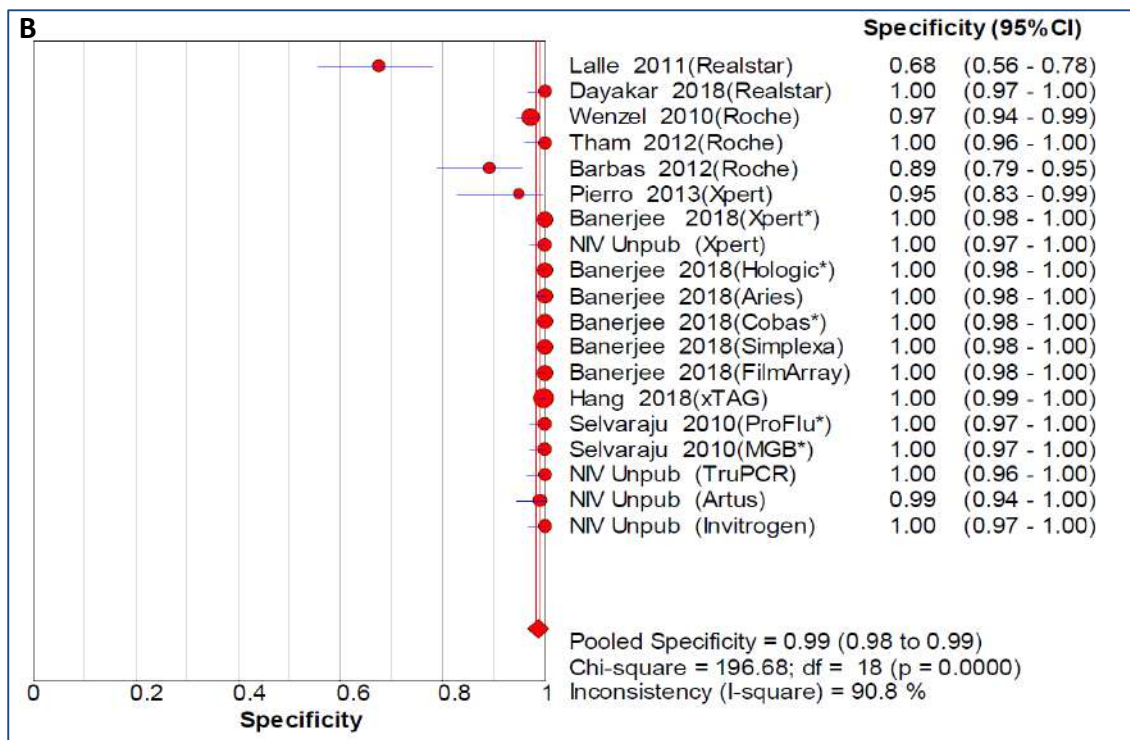
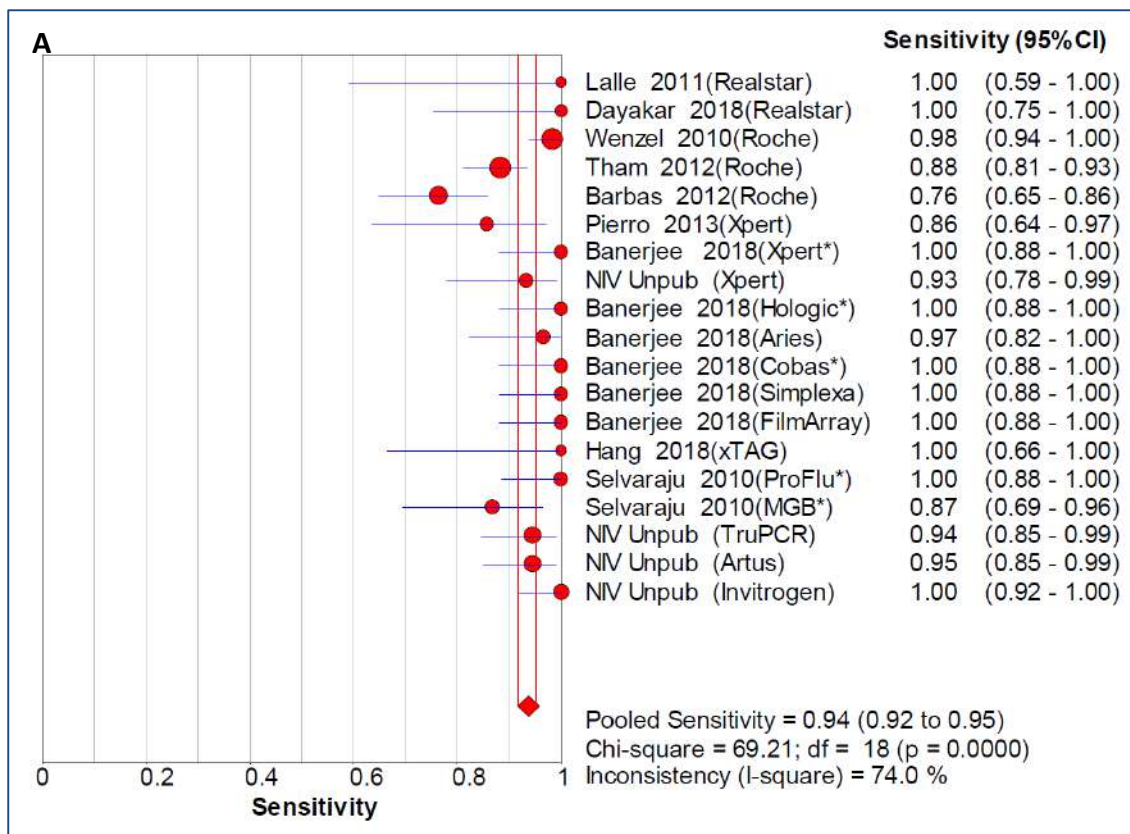


Figure 3: Forest plot for sensitivity (A) and specificity (B) of each individual study for H1N1, the pooled estimate are represented by diamond and the horizontal lines represent 95% confidence intervals (CI).

Primary data Collection

4.2 Validation Study:

On the other hand, data were also collected from in-house reports (NIV data), four (n=4) kits were evaluated during the financial year 2018-2019.

Thermo Fisher Scientific (Invitrogen Pandemic H1N1/09 Assay kit)

Pandemic H1N1/09 Assay Set v3.0 contains components that are Influenza A Assay, Pandemic Influenza A assay, Pandemic H1 Assay and RNase P control Assay. Sensitivity and specificity for Influenza A target of A(H1N1)pdm09 virus was 100% (95% CI: 91.8, 100) and 100% (95% CI: 96.53, 100) respectively. Sensitivity and specificity for Influenza Hemagglutinin H1 target of A/H1N1pdm09 virus was 100% (95% CI: 91.8, 100) and 100% (95% CI: 96.53, 100) respectively. Sensitivity and specificity for Influenza A target of A (H3N2) virus was 100% (95% CI: 85.69, 100) and 100% (95% CI: 97.06, 100) respectively. It takes around 4 hours (which includes sample processing, RNA extraction, real time RT-PCR and result analysis) to complete the test run and 29 samples can be run in one round.

TRUPCR H1N1 kit (3BBlackBio Bhopal)

TRUPCR[®] H1N1 detection real time RT-PCR kit developed for the detection of Influenza A(H1N1)pdm09 virus in clinical samples. Kit contains master mix, enzyme mix, primer probe mix and positive controls. Kit detects internal control of human source RNaseP, universal Influenza A target, Pandemic (2009) Influenza A target & H1 (hemagglutinin) target of Influenza A(H1N1)pdm09 virus. Sensitivity and specificity for Influenza A target was 100% (95% CI: 95.06, 100) and 94.87% (95% CI: 87.54, 97.99) respectively. Sensitivity and specificity for Influenza H1 target of A(H1N1)pdm09 virus was 94.44% (95% CI: 84.89, 98.09) and 100% (95% CI: 96.23, 100) respectively.

Qiagen artus Infl./H1 LC/RG RT-PCR Kit. For research use only, not for use in diagnostic procedures. The artus Infl./H1 LC/RG RT-PCR Kit constitutes two ready-to-use systems for the detection of influenza A and B viral RNA and novel influenza A (H1N1) viral RNA (2009 H1N1 virus) using reverse transcription–polymerase chain reaction (RT-PCR) on Rotor-Gene Q or LightCycler instruments. The Influenza master contains reagents and enzymes for the specific amplification of influenza virus A genome and influenza virus B genome. **It does not differentiate between Influenza A and B type.** The Influenza H1 master contains reagents

and enzymes for the specific amplification of influenza virus H1 (2009 H1N1 virus) genome. Sensitivity and specificity for Influenza target was 84.78% (95% CI: 76.06, 90.71) and 96.61% (95% CI: 88.46, 99.07) respectively. Sensitivity and specificity for Influenza H1 target of A(H1N1)pdm09 virus was 94.55% (95% CI: 85.15, 98.13) and 98.96% (95% CI: 94.33, 99.82) respectively. It takes around 4 hours (which includes sample processing, RNA extraction, real time RT-PCR and result analysis) to complete the test run and 34 or 46 samples can be run in one round depending upon rotor used.

Cepheid Xpert® Flu kit

The Xpert® Flu Assay is an automated in vitro diagnostic test for the qualitative detection and differentiation of **influenza A, influenza B, and influenza A subtype H1N1pdm09** directly from nasal aspirates/washes (NA/W) and nasopharyngeal (NP) swab specimens of patients. The assay is performed on Cepheid GeneXpert Instrument Systems. The GeneXpert Instrument Systems automate and integrate sample processing/lysis, purification, nucleic acid amplification, and detection of the viral target in samples using reverse transcriptase real-time PCR assays. Single-use disposable Xpert Flu Assay cartridges that hold the RT-PCR and PCR reagents and perform the detection PCR processes. A Sample Processing Control (SPC) and a Probe Check Control (PCC) are also included in the cartridge. Sensitivity and specificity for FluA target of A(H1N1)09pdm virus tested was 100% (95% CIs: 88.65, 100) and 99% (95% CIs: 95.39, 99.85) respectively. Sensitivity and specificity for influenza hemagglutinin H1 target of A/H1N1pdm09 virus tested was 93.33% (95% CIs: 78.68, 98.15) and 100% (95% CIs: 96.87, 100) respectively. Sensitivity and specificity for Influenza B virus was 96.67% (95% CIs: 83.33, 99.41) and 100% (95% CIs: 96.87, 100) respectively. Sensitivity and specificity for Flu A target of A (H3N2) virus tested was 63% (95% CIs: 38.64, 81.52) and 100% (95% CIs: 97.19, 100) respectively. It takes around 2 hours to complete the test run, 5 minutes of hands on time for sample processing and 1 to 4 samples can be run in one round depending upon the machine module.

The pooled values of sensitivities and specificities established that RT-PCR based diagnosis of H1N1 can be regarded as the gold standard. Among all the four diagnostic kits tested, Invitrogen kit was shown to possess maximum (100%) sensitivity and specificity values followed by Artus (Qiagen) with 94.5% sensitivity and 99% specificity. However, TRUPCR kit was 94.4% sensitive with a specificity of 100%. Sensitivity was least recorded in Xpert (93.3%) while the specificity remains 100%. As per the NIV data reports, we concluded that

Invitrogen is the kit with maximum diagnostic effectiveness (100%) and Xpert Flu with least clinical effectiveness (93.3%). TRUPCR is the indigenous kit (made in Bhopal, India) and reported almost similar sensitivity & specificity in contrast to other imported kits.

4.3 Primary costing study

For costing of kits, we included prices of various components like consumables, instruments, infrastructure, overheads, Human resource information etc. were collected. All the cost and expenditure estimates in the present study were calculated in Indian National Rupees (INR) for the year 2019 (Table 5).

Table 5: Costing of different kits/sample testing

| S. No. | Cost Heads for data collection | Invitrogen kit cost/sample | Qiagen kit cost/sample | TruPCR kit cost/sample | Cepheid kit cost/sample |
|---------------|--|-----------------------------------|-------------------------------|-------------------------------|--------------------------------|
| 1 | Human Resources | 138.84 | 138.84 | 138.84 | 127.59 |
| 2 | Medical Equipments | 99.31 | 85.02 | 99.31 | 112.79 |
| 3 | Reagents (Medical Consumables) | 1675.07 | 1575.99 | 1320.1 | 4060.75 |
| 4 | Physical Infrastructure | 64.35 | 64.35 | 64.35 | 28.35 |
| 5 | Utilities &Overheads (Water/Electricity/Laundry/Maintenance etc.) | 37.48 | 37.48 | 37.48 | 12.85 |
| 6 | Total | 2015.05 | 1901.69 | 1660.08 | 4342.33 |

4.4. Final Results:

Literature Review: Diagnostic accuracy of the kits for detection of H1N1 showed huge variation. The sensitivity of different kits varied from 76% to 100% whereas the specificity of different kits varied from 67% to 100% among the studies included in the review. Even for the same kit, there was huge variation between different studies both for sensitivity and specificity. (Table 4)

Validation Study: Invitrogen kit exhibited the highest sensitivity and specificity for detection of H1N1 among 4 kits evaluated in validation study.

Costing Study: Cepheid kit was most expensive with cost/test of Rs.4342, whereas TRUPCR was least expensive with cost/test of Rs. 1660.

Operational Feasibility: Integrated Disease Surveillance Programme (IDSP) assisted lab network of 12 Laboratories are providing laboratory support in terms of testing, providing viral transport medium and diagnostic reagents. The laboratory network of ICMR-VRDL (30 labs) has also been activated to test for H1N1 cases. All these labs are currently using real time RT-PCR test for diagnosis of influenza H1N1 using Invitrogen kit. The present study reconfirms that Invitrogen kit is most cost effective kit for diagnosis of influenza H1N1 with an incremental cost of 355 Rs/test. As the kit uses an open system, it could be used in any real time PCR platform. Already being used in the system, the staff is trained in using the kit also. Therefore, there will be no additional burden in terms of procuring new platforms, or training of staff and cost of kits.

Cost Effectiveness:

- Influenza is an acute event and disease may range from mild symptoms to severe complications depending upon the age and other co-morbidities of the patients. Influenza testing is not needed for all outpatients with signs and symptoms of influenza to make antiviral treatment decisions. If treatment is clinically indicated, antiviral treatment is not withheld from outpatients or hospitalized patients with suspected influenza while awaiting influenza testing results. However, the diagnostic information is valuable for many other reasons. It does have a value of reassurance for the patients and the families and also help them seeking proper care and in taking due cautions.
- If only H1N1 detection (not considering H3N2 and Influenza B) is considered for deciding the cost effectiveness, TRUPCR kit dominated over Qiagen and Cepheid kit with least cost (1660 Rs/test) and highest accuracy (sensitivity 94%, specificity 100%)

among these three kits, and thus Qiagen and Cepheid were excluded from cost-effectiveness analysis. While comparing the TRUPCR kit and Invitrogen kit, later shows higher accuracy with an incremental cost of 355 Rs/test.

- If accuracy of overall kit is considered including Influenza A and Influenza B, Cepheid kit can detect both subtypes in single reaction including the subtypes also. In addition to detecting both subtypes, the Cepheid kit can provide results in least of the time. The kit is highly automated and thus easiest to be performed among the four kits. But at the same time, this kit works in a closed system model, that means the kit works only in a given platform and only 1-4 samples can be tested in one go, depending upon the machine module being used.

Table 6: Summary Table

| Target* | | Invitrogen Kit | Qiagen kit | TruPCR kit | Cepheid kit |
|-------------------------|---------------------|---|--|--|---|
| Cost (Rs) Per Sample | | 2015 | 1902 | 1660 | 4342 |
| Ease of doing | | Easy | Easy | Easy | Easiest |
| Turn around time | | 4 hours | 4 hours | 4 hours | 2 hours |
| Samples in one go | | 29 Samples | 34 or 46 samples, depending upon the rotor used. | 29 Samples | 1 to 4 samples, depending upon the machine module. |
| Operational Feasibility | | Open system Existing labs equipped with RT-PCR machine | Open system Can be used in existing facilities. | Open system Can be used in existing facilities. | Closed system Health system will need to buy new RT-PCR machines, if this kit is introduced. |
| Influenza A | Sensitivity (95%CI) | 100 (91-100) | 84 (76-90) | 100 (95-100) | 100 (88-100) |
| | Specificity (95%CI) | 100 (96-100) | 96 (88-99) | 94 (87-97) | 99 (95-99) |
| H1N1 | Sensitivity (95%CI) | 100 (91-100) | 94 (85-98) | 94 (84-98) | 93 (78-93) |
| | Specificity (95%CI) | 100 (96-100) | 98 (94-99) | 100 (96-100) | 100 (96-100) |

| | | | | | |
|------|------------------------|-----------------|--|--|-----------------|
| H3N2 | Sensitivity (95%CI) | 100 (85-100) | | | 63 (38-81) |
| | Specificity (95%CI) | 100 (97-100) | | | 100 (97-100) |
| B | Sensitivity (95%CI) | | | | 96 (83-99) |
| | Specificity (95%CI) | | | | 100 (96-100) |

*In-house evaluated kit (Unpublished NIV data as reported in Table 2)

4.5 Study Recommendations:

1. In view of highest diagnostic accuracy (100% sensitivity and 100% specificity) among all the kits evaluated in this study, CDC/WHO real time RT-PCR kit (Invitrogen) is recommended for diagnosis of Category C patients for influenza A/H1N1pdm09 virus from clinical samples with an incremental cost of 355 Rs/test.
2. Diagnostics of H1N1 in India, is currently being provided by ICMR-VRDL and NCDC network and all these centres are using real time PCR based technique with Invitrogen kits. The present study reconfirms the fact CDC/WHO real time RT-PCR kit (Invitrogen) is most cost effective kit for H1N1 diagnostics with no additional burden to the healthcare system.

5. Strengths of the study:

- First comprehensive HTA study on realtime PCR kits for H1N1 diagnosis.
- Supported by systematic review.
- Supported by primary study done specifically for this HTA analysis to estimate the diagnostic accuracy of the kits by an in house validation study.
- Supported by primary study done specifically for this HTA analysis to estimate the cost of resources utilized, medical and non-medical cost for H1N1 testing.
- This study also considered highly valuable suggestions and key points that emerged after intensive stakeholder's consultation.

Limitations of the study:

- More kits needs to be evaluated from different companies. Three companies have already approached to NIV for their evaluation. These kits can also be considered in future.

Acknowledgement:

This project was funded by DHR (T.11011/02/2017-HR). Dr. Naveen Minhas worked as research associate in this project. We thank Mr. Santosh Jadhav for statistical analysis and Dr. YK Gurav for critical review of this report. Dr. Aksahy Singh Chauhan and Dr. Malkeet Singh provided technical support. We thank Dr. Nishant Jaiswal, Postgraduate Institute of Medical Education and Research, Chandigarh, for providing us EMBASE search results.

References:

1. Lim FJ, de Klerk N, Blyth CC, Fathima P, Moore HC. Systematic review and meta-analysis of respiratory viral coinfections in children. *Respirology* 2016;21:648-55.
2. Stöhr, K. Influenza—WHO cares. *Lancet Infect. Dis.* 2, 517 (2002).
3. Koul PA, Broor S, Saha S, Barnes J, Smith C, Shaw M, Chadha M, Lal RB. Differences in influenza seasonality by latitude, northern India. *Emerg Infect Dis.* 2014 Oct;20(10):1723-6.
4. Chadha MS, Potdar VA, Saha S, Koul PA, Broor S, Dar L, Chawla-Sarkar M, Biswas D, Gunasekaran P, Abraham AM, Shrikhande S, Jain A, Anukumar B, Lal RB, Mishra AC. Dynamics of influenza seasonality at sub-regional levels in India and implications for vaccination timing. *PLoS One.* 2015 May 4;10(5):e0124122.
5. Nair H, Simões EA, Rudan I, Gessner BD et al; Severe Acute Lower Respiratory Infections Working Group. Global and regional burden of hospital admissions for severe acute lower respiratory infections in young children in 2010: a systematic analysis. *Lancet.* 2013 Apr 20;381(9875):1380-90.
6. Lafond KE, Nair H, Rasooly MH, Valente F, Booy R et al; Global Respiratory Hospitalizations—Influenza Proportion Positive (GRIPP) Working Group. Global Role and Burden of Influenza in Pediatric Respiratory Hospitalizations, 1982-2012: A Systematic Analysis. *PLoS Med.* 2016 Mar 24;13(3):e1001977.
7. Mishra AC, Chadha MS, Choudhary ML, Potdar VA. Pandemic influenza (H1N1) 2009 is associated with severe disease in India. *PLoS One.* 2010 May 7;5(5):e10540.
8. Broor S, Krishnan A, Roy DS, Dhakad S, Kaushik S, Mir MA, Singh Y, Moen A, Chadha M, Mishra AC, Lal RB. Dynamic patterns of circulating seasonal and pandemic A(H1N1)pdm09 influenza viruses from 2007-2010 in and around Delhi, India. *PLoS One.* 2012;7(1):e29129.
9. Koul P, Khan U, Bhat K, Saha S, Broor S, Lal R, Chadha M. Recrudescence Wave of A/H1N1pdm09 Influenza Viruses in Winter 2012-2013 in Kashmir, India. *PLoS Curr.* 2013 Sep 26;5.
10. Broor S, Sullender W, Fowler K, Gupta V, Widdowson MA, Krishnan A, Lal RB. Demographic shift of influenza A(H1N1)pdm09 during and after pandemic, rural India. *Emerg Infect Dis.* 2012 Sep;18(9):1472-5.
11. Chadha MS, Hirve S, Dawood FS, Lele P, Deoshatwar A, Sambhudas S, Juvekar S, LaFond KE, Mott JA, Lal RB, Mishra AC. Burden of seasonal and pandemic influenza-associated hospitalization during and after 2009 A(H1N1)pdm09 pandemic in a rural community in India. *PLoS One.* 2013 May 15;8(5):e55918.
12. Hirve S, Krishnan A, Dawood FS, Lele P, Saha S, Rai S, Gupta V, Lafond KE, Juvekar S, Potdar V, Broor S, Lal RB, Chadha M. Incidence of influenza-associated hospitalization in rural communities in western and northern India, 2010-2012: a multi-site population-based study. *J Infect.* 2015 Feb;70(2):160-70.
13. Lalle, E., Bordi, L., Meschi, S., Selleri, M., Valli, M. B., Patella, E., & Capobianchi, M. R. (2011). Comparison of two real-time RT PCR-based systems for the detection and typing of the pandemic influenza A virus, 2009. *Journal of Virological Methods*, 177(2), 193–196. <https://doi.org/10.1016/j.jviromet.2011.07.004>.
14. Pierro, A., Gaibani, P., Rossini, G., Landini, M. P., & Sambri, V. (2013). Clinical application of a molecular method based on Real Time RT-PCR for detection of influenza A(H1N1)v virus. *New Microbiologica*, 36(4), 405–408.
15. Banerjee, D., Kanwar, N., Hassan, F., Essmyer, C., & Selvarangan, R. (2018). Comparison of six sample-to-answer influenza A/B and respiratory syncytial virus

- nucleic acid amplification assays using respiratory specimens from children. *Journal of Clinical Microbiology*, 56(11). <https://doi.org/10.1128/JCM.00930-18>
16. Thi Ty Hang, V., Thi Han Ny, N., My Phuc, T., Thi Thanh Tam, P., Thao Huong, D., Dang Trung Nghia, H., ... Wolfe, N. (2017). Evaluation of the Luminex xTAG Respiratory Viral Panel FAST v2 assay for detection of multiple respiratory viral pathogens in nasal and throat swabs in Vietnam [version 1; referees: 2 approved]. *Wellcome Open Research*, 2, 1–11. <https://doi.org/10.12688/wellcomeopenres.12429.1>
 17. Wenzel, J. J., Panning, M., Kaul, K. L., Mangold, K. A., Revell, P. A., Luna, R. A., ... Reischl, U. (2010). Analytical performance determination and clinical validation of the novel Roche realtime ready influenza A/H1N1 detection set. *Journal of Clinical Microbiology*, 48(9), 3088–3094. <https://doi.org/10.1128/JCM.00785-10>
 18. Tham, N. T., Hang, V. T. T., Khanh, T. H., Viet, D. C., Hien, T. T., Farrar, J., ... van Doorn, H. R. (2012). Comparison of the Roche RealTime ready Influenza A/H1N1 Detection Set with CDC A/H1N1pdm09 RT-PCR on samples from three hospitals in Ho Chi Minh City, Vietnam. *Diagnostic Microbiology and Infectious Disease*, 74(2), 131–136. <https://doi.org/10.1016/j.diagmicrobio.2012.06.003>
 19. Selvaraju, S. B., & Selvarangan, R. (2010). Evaluation of three influenza A and B real-time reverse transcription-PCR assays and a new 2009 H1N1 assay for detection of influenza viruses. *Journal of Clinical Microbiology*, 48(11), 3870–3875. <https://doi.org/10.1128/JCM.02464-09>
 20. Barbás, M. G., Gallego, S. V., Castro, G. M., Kademian, S., de Leon, J., Cudolá, A., & Baumeister, E. (2012). Performance of a commercial assay for the diagnosis of influenza A (H1N1) infection in comparison to the centers for disease control and prevention protocol of real time RT-PCR. *Revista Argentina de Microbiologia*, 44(1), 26–29. <https://doi.org/10.1590/S0325-75412012000100006>
 21. Dayakar, S., Pillai, H. R., Thulasi, V. P., Jayalekshmi, D., & Nair, R. R. (2018). Comparative Study of Molecular Approaches for the Detection of Influenza Virus from Patient Samples Using Real-time PCR: Prospective Disease Burden Study in Kerala (India) from 2010 to 2016. *Current Infectious Disease Reports*, 20(8). <https://doi.org/10.1007/s11908-018-0632-y>
 22. Guidelines on categorization of Seasonal Influenza cases during screening for home isolation, testing, treatment and hospitalization (25.02.2019) <https://ncdc.gov.in/showfile.php?lid=361>

Annexures 1: Pandemic H1N1/09 Assay kit- Invitrogen

| Head | Equipment | Unit Price | Quantity | Expected life (yrs) of Equipment | Discount Rate | Annual Factor | Equivalent Unit Annual Cost Capital | Annual Maintenance Cost | Present Worth value of Maintenance | Annual Cost | Appor tioned Cost/ sample | |
|---------|--|------------|----------|----------------------------------|---------------|---------------|-------------------------------------|-------------------------|------------------------------------|-------------|---------------------------|--|
| Capital | Laminar Air Flow | 50000 | 1 | 10 | 0.03 | 0.117230507 | 58615.2533 | 5000 | 3720.469574 | 62335.72288 | 12.98660893 | |
| | Benchtop centrifuge with rotor for 2 ml reaction tubes | 25000 | 2 | 10 | 0.03 | 0.117230507 | 58615.2533 | 5000 | 3720.469574 | 62335.72288 | 12.98660893 | |
| | 7500 Fast Dx Real time PCR instrument (Applied Biosystems) with Laptop & accessories | 18000 | 1 | 10 | 0.03 | 0.117230507 | 21101.49119 | 18000 | 13393.69047 | 22440.86024 | 46.75179216 | |
| | Vertical Autoclave | 20000 | 1 | 10 | 0.03 | 0.117230507 | 23446.10132 | 2000 | 1488.18783 | 24934.28915 | 5.194643573 | |
| | Vortex mixer | 20000 | 2 | 10 | 0.03 | 0.117230507 | 4689.220264 | 400 | 297.637566 | 4986.85783 | 1.038928715 | |
| | Mini Plate spinner | 50000 | 1 | 10 | 0.03 | 0.117230507 | 5861.52533 | 500 | 372.0469574 | 6233.572288 | 1.298660893 | |
| | Mini Spin | 20000 | 1 | 10 | 0.03 | 0.117230507 | 2344.610132 | 200 | 148.818783 | 2493.428915 | 0.519464357 | |
| | -20 (freezer) | 10000 | 1 | 10 | 0.03 | 0.117230507 | 11723.05066 | 1000 | 744.0939149 | 12467.14458 | 2.597321787 | |
| | Refrigerator | 30000 | 1 | 10 | 0.03 | 0.117230507 | 3516.915198 | 300 | 223.2281745 | 3740.143373 | 0.779196536 | |
| | Computer system | 40000 | 1 | 10 | 0.03 | 0.117230507 | 4689.220264 | 400 | 297.637566 | 4986.85783 | 1.038928715 | |
| | UPS | 10000 | 1 | 10 | 0.03 | 0.117230507 | 11723.05066 | 1000 | 744.0939149 | 12467.14458 | 2.597321787 | |
| | Air conditioner (AC) | 40000 | 4 | 10 | 0.03 | 0.117230507 | 18756.88106 | 1600 | 1190.550264 | 19947.43132 | 4.155714858 | |

| | | | | | | | | | | | | |
|-------------------------|-------------------------|--------------------------------|-------------------|---|---|--|-----------------|--------------------------------|-----------------------------------|---|---|--|
| | Printer cum scanner | 15000 | 1 | 5 | 0.03 | 0.218354571 | 3275.318571 | 300 | 258.7826353 | 3534.101206 | 0.736271085 | |
| | Pipettes: (Genaxy) | | | | | | | | | | | |
| | 2-20ul (NPX-20) | 15000 | 3 | 5 | 0.03 | 0.218354571 | 9825.955713 | 900 | 776.3479059 | 10602.30362 | 2.208813254 | |
| | 20-200ul (NPX-200) | 15000 | 3 | 5 | 0.03 | 0.218354571 | 9825.955713 | 900 | 776.3479059 | 10602.30362 | 2.208813254 | |
| | 100-1000ul (NPX-1000) | 15000 | 3 | 5 | 0.03 | 0.218354571 | 9825.955713 | 900 | 776.3479059 | 10602.30362 | 2.208813254 | |
| | | | | | | | | | | | | |
| | Total Amount per sample | 99.30790209 | | | | | | | | | | |
| | | | | | | | | | | | | |
| Manpower | Designation | salary | Number of persons | hours work each day | number of days work per month | Nu. Of hours per month | Salary per hour | No. of hours for this work/day | no. of hours for spent each month | Number of specimens processed per month | Amount spent per month for staff salary | Amount spent for required staff per sample |
| | | | | | | | | | | | | |
| | Techician | 18000 | 1 | 8 | 22 | 176 | 102.2727273 | 2 | 44 | 400 | 4500 | 11.25 |
| | Research Assistant | 31000 | 2 | 8 | 22 | 176 | 176.1363636 | 4 | 176 | 400 | 31000 | 77.5 |
| | Scientist | 126300 | 1 | 8 | 22 | 176 | 717.6136364 | 1 | 22 | 400 | 15787.5 | 39.46875 |
| | Multitasking staff | 17000 | 1 | 8 | 22 | 176 | 96.59090909 | 2 | 44 | 400 | 4250 | 10.625 |
| | | | | | | | | | | | | |
| | Total Amount per sample | 138.84375 | | | | | | | | | | |
| | | | | | | | | | | | | |
| Physical Infrastructure | Room | Service for which room is used | Area (in sqft) | Monthly Rental Price (per sqft), space used for | Rental to be used for calculation/month | Rental to be used for calculation/sample | | | | | | |

| | | | | | | | | | | | | |
|--------------------------------------|-------------------------------|---|-----------------------------|--|---------------|-------|--|--|--|--|--|--|
| | | | | other purpos e also | | | | | | | | |
| | Separation Room | Sampl e separa tion | 78 | 7020 | 7020 | 17.55 | | | | | | |
| | RNA extraction room | RNA extrac tion | 160 | 14400 | 7200 | 18 | | | | | | |
| | Clean room | Reage nt prepar ation | 160 | 14400 | 7200 | 18 | | | | | | |
| | Machine room | PCR | 192 | 17280 | 4320 | 10.8 | | | | | | |
| | | | | | | | | | | | | |
| | Total Amount per sample | 64.35 | | | | | | | | | | |
| | | | | | | | | | | | | |
| Overh ead | Cost Head | Consu ptio n (specif ic to servic e in cost)/ day | Freq uenc y of use | Consu ptio n (specif ic to servic e in cost)/ Month s | Cost/test | | | | | | | |
| | Electricity | 408.83 5 | Ever y day | 12265. 05 | 30.66262 5 | | | | | | | |
| | Water | 36 | Ever y day | 1080 | 2.7 | | | | | | | |
| | Telephone/ Fax/Printers | 10 | Ever y day | 300 | 0.75 | | | | | | | |
| | Laundry | 10 | Ever y day | 300 | 0.75 | | | | | | | |
| | Sanitation | 10 | Ever y day | 300 | 0.75 | | | | | | | |
| | Sterilization | 20 | Ever y day | 600 | 1.5 | | | | | | | |
| | Others | 5 | Ever y day | 150 | 0.375 | | | | | | | |
| | | | | | | | | | | | | |
| | Total Amount per sample | 37.487 625 | | | | | | | | | | |
| | | | | | | | | | | | | |
| Reage nts/ Consu mable s | Total | 1675.0 7 | | | | | | | | | | |
| | | | | | | | | | | | | |

| | | | | | | | | | | | | |
|------------------|-------------|--|--|--|--|--|--|--|--|--|--|--|
| Grand total (Rs) | 2015.059277 | | | | | | | | | | | |
|------------------|-------------|--|--|--|--|--|--|--|--|--|--|--|

Annexures 2: Artus- Qiagen

| Capital | Equipment | Unit Price | Quantity | Expected life (yrs) of Equipment | Discount Rate | Annual Factor | Equivalent Unit Annual Capital Cost | Annual Maintenance Cost | Present Worth value of Maintenance | Annual Cost | Appor tioned Cost/ sample | |
|---------|--|-------------|----------|----------------------------------|---------------|---------------|-------------------------------------|-------------------------|------------------------------------|-------------|---------------------------|--|
| | Laminar Air Flow | 50000 | 1 | 10 | 0.03 | 0.117230507 | 58615.2533 | 5000 | 3720.469574 | 62335.72288 | 12.98660893 | |
| | Benchtop centrifuge with rotor for 2 ml reaction tubes | 25000 | 2 | 10 | 0.03 | 0.117230507 | 58615.2533 | 5000 | 3720.469574 | 62335.72288 | 12.98660893 | |
| | Rotor-Gene® Q5plex HRM platform, cat no. 9001580 | 125000 | 1 | 10 | 0.03 | 0.117230507 | 146538.1333 | 12500 | 9301.173936 | 155839.3072 | 32.46652233 | |
| | Vertical Autoclave | 20000 | 1 | 10 | 0.03 | 0.117230507 | 23446.10132 | 2000 | 1488.18783 | 24934.28915 | 5.194643573 | |
| | Vortex mixer | 20000 | 2 | 10 | 0.03 | 0.117230507 | 4689.220264 | 400 | 297.637566 | 4986.85783 | 1.038928715 | |
| | Mini Plate spinner | 50000 | 1 | 10 | 0.03 | 0.117230507 | 5861.52533 | 500 | 372.0469574 | 6233.572288 | 1.298660893 | |
| | Mini Spin | 20000 | 1 | 10 | 0.03 | 0.117230507 | 2344.610132 | 200 | 148.818783 | 2493.428915 | 0.519464357 | |
| | -20 (freezer) | 10000 | 1 | 10 | 0.03 | 0.117230507 | 11723.05066 | 1000 | 744.0939149 | 12467.14458 | 2.597321787 | |
| | Refrigerator | 30000 | 1 | 10 | 0.03 | 0.117230507 | 3516.915198 | 300 | 223.2281745 | 3740.143373 | 0.779196536 | |
| | Computer system | 40000 | 1 | 10 | 0.03 | 0.117230507 | 4689.220264 | 400 | 297.637566 | 4986.85783 | 1.038928715 | |
| | UPS | 10000 | 1 | 10 | 0.03 | 0.117230507 | 11723.05066 | 1000 | 744.0939149 | 12467.14458 | 2.597321787 | |
| | Air conditioner (AC) | 40000 | 4 | 10 | 0.03 | 0.117230507 | 18756.88106 | 1600 | 1190.550264 | 19947.43132 | 4.155714858 | |
| | Printer cum scanner | 15000 | 1 | 5 | 0.03 | 0.218354571 | 3275.318571 | 300 | 258.7826353 | 3534.101206 | 0.736271085 | |
| | Pipettes: (Genaxy) | | | | | | | | | | | |
| | 2-20ul (NPX-20) | 15000 | 3 | 5 | 0.03 | 0.218354571 | 9825.955713 | 900 | 776.3479059 | 10602.30362 | 2.208813254 | |
| | 20-200ul (NPX-200) | 15000 | 3 | 5 | 0.03 | 0.218354571 | 9825.955713 | 900 | 776.3479059 | 10602.30362 | 2.208813254 | |
| | 100-1000ul (NPX-1000) | 15000 | 3 | 5 | 0.03 | 0.218354571 | 9825.955713 | 900 | 776.3479059 | 10602.30362 | 2.208813254 | |
| | Total Amount per sample | 85.02263226 | | | | | | | | | | |

| Manpower | Designation | salary | Number of persons | hours work each day | number of days work per month | Nu. Of hours per month | Salary per hour | No. of hours for this work/day | no. of hours for spent each month | Number of specimens processed per month | Amount spent per month for staff salary | Amount spent for required staff per sample |
|-------------------------|-------------------------|--------------------------------|-------------------|--|---|---------------------------|-----------------|--------------------------------|-----------------------------------|---|---|--|
| | Techician | 18000 | 1 | 8 | 22 | 176 | 102.27 27273 | 2 | 44 | 400 | 4500 | 11.25 |
| | Research Assistant | 31000 | 2 | 8 | 22 | 176 | 176.13 63636 | 4 | 176 | 400 | 31000 | 77.5 |
| | Scientist | 126300 | 1 | 8 | 22 | 176 | 717.61 36364 | 1 | 22 | 400 | 15787.5 | 39.46875 |
| | Multitasking staff | 17000 | 1 | 8 | 22 | 176 | 96.590 90909 | 2 | 44 | 400 | 4250 | 10.625 |
| | Total Amount per sample | 138.84375 | | | | | | | | | | |
| Physical Infrastructure | Room | Service for which room is used | Area (in sqft) | Monthly Rental Price (per sqft), space used for other purpose also | Rental to be used for calculation/month | Rental calculation/sample | | | | | | |
| | Separation Room | Sample separation | 78 | 7020 | 7020 | 17.55 | | | | | | |
| | RNA extraction room | RNA extraction | 160 | 14400 | 7200 | 18 | | | | | | |
| | Clean room | Reagent preparation | 160 | 14400 | 7200 | 18 | | | | | | |
| | Machine room | PCR | 192 | 17280 | 4320 | 10.8 | | | | | | |
| | Total Amount per sample | 64.35 | | | | | | | | | | |
| Overhead | Cost Head | Consumption (specific to | Frequency of use | Consumption (specific to | Cost/test | | | | | | | |

| | | service in cost)/d ay | | service in cost)/ Month s | | | | | | | | |
|----------------------------------|-------------------------------|--------------------------------|---------------|---------------------------------------|---------------|--|--|--|--|--|--|--|
| | Electricity | 408.83 5 | Ever y day | 12265. 05 | 30.66262 5 | | | | | | | |
| | Water | 36 | Ever y day | 1080 | 2.7 | | | | | | | |
| | Telephone/ Fax/Printers | 10 | Ever y day | 300 | 0.75 | | | | | | | |
| | Laundry | 10 | Ever y day | 300 | 0.75 | | | | | | | |
| | Sanitation | 10 | Ever y day | 300 | 0.75 | | | | | | | |
| | Sterilization | 20 | Ever y day | 600 | 1.5 | | | | | | | |
| | Others | 5 | Ever y day | 150 | 0.375 | | | | | | | |
| | | | | | | | | | | | | |
| | Total Amount per sample | 37.487 625 | | | | | | | | | | |
| | | | | | | | | | | | | |
| Reage nts/ Consu mables | Total | 1575.9 9 | | | | | | | | | | |
| | | | | | | | | | | | | |
| Grand total (Rs) | 1901.69400 7 | | | | | | | | | | | |

Annexures 3: TRUPCR - 3B BlackBio Bhopal

| Capital | Equipment | Unit Price | Quantity | Expected life (yrs) of Equipment | Discount Rate | Annual Factor | Equivalent Unit Annual Cost Capital | Annual Maintenance Cost | Present Worth value of Maintenance | Annual Cost | Appor tioned Cost/ sample | |
|---------|--|------------|----------|----------------------------------|---------------|---------------|-------------------------------------|-------------------------|------------------------------------|-------------|---------------------------|--|
| | Laminar Air Flow | 500000 | 1 | 10 | 0.03 | 0.117230507 | 58615.2533 | 5000 | 3720.469574 | 62335.72288 | 12.98660893 | |
| | Benchtop centrifuge with rotor for 2 ml reaction tubes | 250000 | 2 | 10 | 0.03 | 0.117230507 | 58615.2533 | 5000 | 3720.469574 | 62335.72288 | 12.98660893 | |
| | 7500 Fast Dx Real time PCR instrument (Applied Biosystems) with Laptop & accessories | 180000 | 1 | 10 | 0.03 | 0.117230507 | 211014.9119 | 18000 | 13393.69047 | 224408.6024 | 46.75179216 | |
| | Vertical Autoclave | 200000 | 1 | 10 | 0.03 | 0.117230507 | 23446.10132 | 2000 | 1488.18783 | 24934.28915 | 5.194643573 | |
| | Vortex mixer | 20000 | 2 | 10 | 0.03 | 0.117230507 | 4689.220264 | 400 | 297.637566 | 4986.85783 | 1.038928715 | |
| | Mini Plate spinner | 50000 | 1 | 10 | 0.03 | 0.117230507 | 5861.52533 | 500 | 372.0469574 | 6233.572288 | 1.298660893 | |
| | Mini Spin | 20000 | 1 | 10 | 0.03 | 0.117230507 | 2344.610132 | 200 | 148.818783 | 2493.428915 | 0.519464357 | |
| | -20 (freezer) | 100000 | 1 | 10 | 0.03 | 0.117230507 | 11723.05066 | 1000 | 744.0939149 | 12467.14458 | 2.597321787 | |
| | Refrigerator | 30000 | 1 | 10 | 0.03 | 0.117230507 | 3516.915198 | 300 | 223.2281745 | 3740.143373 | 0.779196536 | |
| | Computer system | 40000 | 1 | 10 | 0.03 | 0.117230507 | 4689.220264 | 400 | 297.637566 | 4986.85783 | 1.038928715 | |
| | UPS | 100000 | 1 | 10 | 0.03 | 0.117230507 | 11723.05066 | 1000 | 744.0939149 | 12467.14458 | 2.597321787 | |
| | Air conditioner (AC) | 40000 | 4 | 10 | 0.03 | 0.117230507 | 18756.88106 | 1600 | 1190.550264 | 19947.43132 | 4.155714858 | |

| | | | | | | | | | | | | |
|-------------------------|-------------------------|--------------------------------|-------------------|---|---|--|-----------------|--------------------------------|-----------------------------------|---|---|--|
| | Printer cum scanner | 15000 | 1 | 5 | 0.03 | 0.218354571 | 3275.318571 | 300 | 258.7826353 | 3534.101206 | 0.736271085 | |
| | Pipettes: (Genaxy) | | | | | | | | | | | |
| | 2-20ul (NPX-20) | 15000 | 3 | 5 | 0.03 | 0.218354571 | 9825.955713 | 900 | 776.3479059 | 10602.30362 | 2.208813254 | |
| | 20-200ul (NPX-200) | 15000 | 3 | 5 | 0.03 | 0.218354571 | 9825.955713 | 900 | 776.3479059 | 10602.30362 | 2.208813254 | |
| | 100-1000ul (NPX-1000) | 15000 | 3 | 5 | 0.03 | 0.218354571 | 9825.955713 | 900 | 776.3479059 | 10602.30362 | 2.208813254 | |
| | | | | | | | | | | | | |
| | Total Amount per sample | 99.30790209 | | | | | | | | | | |
| | | | | | | | | | | | | |
| Manpower | Designation | salary | Number of persons | hours work each day | number of days work per month | Nu. Of hours per month | Salary per hour | No. of hours for this work/day | no. of hours for spent each month | Number of specimens processed per month | Amount spent per month for staff salary | Amount spent for required staff per sample |
| | Techcician | 18000 | 1 | 8 | 22 | 176 | 102.2727273 | 2 | 44 | 400 | 4500 | 11.25 |
| | Research Assistant | 31000 | 2 | 8 | 22 | 176 | 176.1363636 | 4 | 176 | 400 | 31000 | 77.5 |
| | Scientist | 126300 | 1 | 8 | 22 | 176 | 717.6136364 | 1 | 22 | 400 | 15787.5 | 39.46875 |
| | Multitasking staff | 17000 | 1 | 8 | 22 | 176 | 96.59090909 | 2 | 44 | 400 | 4250 | 10.625 |
| | | | | | | | | | | | | |
| | Total Amount per sample | 138.84375 | | | | | | | | | | |
| | | | | | | | | | | | | |
| Physical Infrastructure | Room | Service for which room is used | Area (in sqft) | Monthly Rental Price (per sqft), space used for other | Rental to be used for calculation/month | Rental to be used for calculation/sample | | | | | | |

| | | | | | | | | | | | | |
|----------|-------------------------|---|------------------|--|-----------|-------|--|--|--|--|--|--|
| | | | | purpose also | | | | | | | | |
| | Separation Room | Sample separation | 78 | 7020 | 7020 | 17.55 | | | | | | |
| | RNA extraction room | RNA extraction | 160 | 14400 | 7200 | 18 | | | | | | |
| | Clean room | Reagent preparation | 160 | 14400 | 7200 | 18 | | | | | | |
| | Machine room | PCR | 192 | 17280 | 4320 | 10.8 | | | | | | |
| | | | | | | | | | | | | |
| | Total Amount per sample | 64.35 | | | | | | | | | | |
| | | | | | | | | | | | | |
| Overhead | Cost Head | Consumption (specific to service in cost)/day | Frequency of use | Consumption (specific to service in cost)/Months | Cost/test | | | | | | | |
| | Electricity | 408.835 | Every day | 12265.05 | 30.662625 | | | | | | | |
| | Water | 36 | Every day | 1080 | 2.7 | | | | | | | |
| | Telephone/Fax/Printers | 10 | Every day | 300 | 0.75 | | | | | | | |
| | Laundry | 10 | Every day | 300 | 0.75 | | | | | | | |
| | Sanitation | 10 | Every day | 300 | 0.75 | | | | | | | |
| | Sterilization | 20 | Every day | 600 | 1.5 | | | | | | | |
| | Others | 5 | Every day | 150 | 0.375 | | | | | | | |
| | | | | | | | | | | | | |
| | Total Amount per sample | 37.487625 | | | | | | | | | | |
| | | | | | | | | | | | | |
| | Reagents/Consumables | 1320.1 | | | | | | | | | | |
| | | | | | | | | | | | | |

| | | | | | | | | | | | | |
|------------------|-------------|--|--|--|--|--|--|--|--|--|--|--|
| Grand total (Rs) | 1660.089277 | | | | | | | | | | | |
|------------------|-------------|--|--|--|--|--|--|--|--|--|--|--|

Annexures 4: Xpert Flu- Cepheid

| Capital | Equipment | Unit Price | Quantity | Expected life (yrs) of Equipment | Discount Rate | Annual Factor | Equivalent Unit Annual Cost Capital | Annual Maintenance Cost | Present Worth value of Maintenance | Annual Cost | Appor tioned Cost/ sample | |
|---------|--|------------|----------|----------------------------------|---------------|---------------|-------------------------------------|-------------------------|------------------------------------|-------------|---------------------------|--|
| | Laminar Air Flow | 500000 | 1 | 10 | 0.03 | 0.117230507 | 58615.2533 | 5000 | 3720.469574 | 62335.72288 | 12.98660893 | |
| | Benchtop centrifuge with rotor for 2 ml reaction tubes | 250000 | 1 | 10 | 0.03 | 0.117230507 | 29307.62665 | 2500 | 1860.234787 | 31167.86144 | 6.493304466 | |
| | GeneXpert GXIV-4-L (4modules) | 3009000 | 1 | 10 | 0.03 | 0.117230507 | 352746.5944 | 30090 | 22389.7859 | 375136.3803 | 78.15341256 | |
| | Vertical Autoclave | 200000 | 1 | 10 | 0.03 | 0.117230507 | 23446.10132 | 2000 | 1488.18783 | 24934.28915 | 5.194643573 | |
| | Vortex mixer | 20000 | 1 | 10 | 0.03 | 0.117230507 | 2344.610132 | 200 | 148.818783 | 2493.428915 | 0.519464357 | |
| | Refrigerator | 30000 | 1 | 10 | 0.03 | 0.117230507 | 3516.915198 | 300 | 223.2281745 | 3740.143373 | 0.779196536 | |
| | Computer system | 40000 | 1 | 10 | 0.03 | 0.117230507 | 4689.220264 | 400 | 297.637566 | 4986.85783 | 1.038928715 | |
| | UPS | 100000 | 1 | 10 | 0.03 | 0.117230507 | 11723.05066 | 1000 | 744.0939149 | 12467.14458 | 2.597321787 | |
| | Air conditioner (AC) | 40000 | 2 | 10 | 0.03 | 0.117230507 | 9378.440528 | 800 | 595.2751319 | 9973.71566 | 2.077857429 | |
| | Printer cum scanner | 15000 | 1 | 5 | 0.03 | 0.218354571 | 3275.318571 | 300 | 258.7826353 | 3534.101206 | 0.736271085 | |
| | Pipettes: (Genaxy) | | | | | | | | | | | |
| | 2-20ul (NPX-20) | 15000 | 1 | 5 | 0.03 | 0.218354571 | 3275.318571 | 300 | 258.7826353 | 3534.101206 | 0.736271085 | |
| | 20-200ul (NPX-200) | 15000 | 1 | 5 | 0.03 | 0.218354571 | 3275.318571 | 300 | 258.7826353 | 3534.101206 | 0.736271085 | |
| | 100-1000ul (NPX-1000) | 15000 | 1 | 5 | 0.03 | 0.218354571 | 3275.318571 | 300 | 258.7826353 | 3534.101206 | 0.736271085 | |
| | | | | | | | | | | | | |

| | | | | | | | | | | | | |
|-------------------------|-------------------------|--------------------------------|-------------------|--|---|--|---------------------|--------------------------------|-----------------------------------|---|---|--|
| | Total Amount per sample | 112.78 58227 | | | | | | | | | | |
| Manpower | Designation | salary | Number of persons | hours work each day | number of days work per month | Nu. Of hours per month | Salary per hour | No. of hours for this work/day | no. of hours for spent each month | Number of specimens processed per month | Amount spent per month for staff salary | Amount spent for required staff per sample |
| | Techician | 18000 | 0 | 8 | 22 | 176 | 102.2 72727 3 | 2 | 0 | 400 | 0 | 0 |
| | Research Assistant | 31000 | 1 | 8 | 22 | 176 | 176.1 36363 6 | 8 | 176 | 400 | 31000 | 77.5 |
| | Scientist | 12630 0 | 1 | 8 | 22 | 176 | 717.6 13636 4 | 1 | 22 | 400 | 15787 .5 | 39.4 687 5 |
| | Multitasking staff | 17000 | 1 | 8 | 22 | 176 | 96.59 09090 9 | 2 | 44 | 400 | 4250 | 10.6 25 |
| | Total Amount per sample | 127.59 375 | | | | | | | | | | |
| Physical Infrastructure | Room | Service for which room is used | Area (in sqft) | Monthly Rental Price (per sqft), space used for other purpose also | Rental to be used for calculation/month | Rental to be used for calculation/sample | | | | | | |
| | Separation Room | Sample separation | 78 | 7020 | 7020 | 17.55 | | | | | | |
| | Machine room | PCR | 192 | 17280 | 4320 | 10.8 | | | | | | |
| | Total Amount per sample | 28.35 | | | | | | | | | | |
| Overhead | Cost Head | Consumption | Frequency | Consumption | Cost/test | | | | | | | |

| | | n (specific to service in cost)/ day | y of use | n (specific to service in cost)/ Months | | | | | | | | |
|--|-------------------------------|--|-------------|--|---------|--|--|--|--|--|--|--|
| | Electricity | 98.35 | Every day | 2950.5 | 7.37625 | | | | | | | |
| | Water | 18 | Every day | 540 | 1.35 | | | | | | | |
| | Telephone/ Fax/Printers | 10 | Every day | 300 | 0.75 | | | | | | | |
| | Laundry | 10 | Every day | 300 | 0.75 | | | | | | | |
| | Sanitation | 10 | Every day | 300 | 0.75 | | | | | | | |
| | Sterilization | 20 | Every day | 600 | 1.5 | | | | | | | |
| | Others | 5 | Every day | 150 | 0.375 | | | | | | | |
| | | | | | | | | | | | | |
| | Total Amount per sample | 12.851 25 | | | | | | | | | | |
| | | | | | | | | | | | | |
| | Reagents/ Consumables | 4060.7 5 | | | | | | | | | | |
| | | | | | | | | | | | | |
| | Grand total (Rs) | 4342.33082 3 | | | | | | | | | | |